

**m6A Rabbit Mab[M6A0]**

**Cat NO. :A14199**

**Information:**

Applications	Reactivity:	UniProt ID:	MW(kDa)	Host	Isotype	Size
Dot Blot	Species independent			Rabbit	IgG	50ul,100ul,200ul

**Applications detail:**

Application	Dilution
Dot Blot	1:1000-2000
The optimal dilutions should be determined by the end user	

**Conjugate:**

UnConjugate

**Form:**

Liquid

**sensitivity:**

Endogenous

**Purification:**

Protein A affinity purified.

**Specificity:**

Antibody is produced by immunizing animals with m6A Small Molecule conjugated to KLH

**Storage buffer and conditions:**

Antibody store in 10 mM PBS, 0.5mg/ml BSA, 50% glycerol (buffer) .

Shipped at 4°C. Store at-20°C or -80°C.

Products are valid for one natural year of receipt.Avoid repeated freeze / thaw cycles.

**Tissue specificity:**

Ubiquitous.

**Subcellular location:**

Nucleus,

**Function:**

**Introduction:** **WB:** Western Blot **IP:** Immunoprecipitation **IHC:** Immunohistochemistry **ChIP:** Chromatin Immunoprecipitation **ICC/IF:** Immunocytochemistry/Immunofluorescence **F:** Flow Cytometry

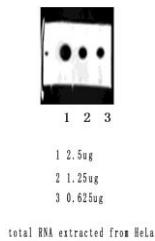
**Cross Reactivity:** **H:** human **M:** mouse **R:** rat **Hm:** hamster **Mk:** monkey **Vr:** virus **Ml:** mink **C:** chicken **Dm** D. melanogaster **X:** Xenopus **Z:** zebrafish **B:** bovine **Dg:** dog **Pg:** pig **Hr:** horse

**For Research Use Only. Not For Use In Diagnostic Procedures.**

Discovered in the 1970s, m6A is the most prevalent internal modification in polyadenylated mRNAs and long non-coding RNAs (lncRNAs) in higher eukaryotes. m6A is widely conserved among eukaryotic species that range from yeast, plants, flies to mammals, as well as among viral RNAs with a nuclear phase. The m6A-based modification is associated with a well-defined RNA motif, RRACH (R: A/G, H: A/C/U). As a representative of the epitranscriptome, m6A mRNA modifications participate in many vital activities in the cell, including stem cell self-renewal and differentiation, mRNA transcription, alternative splicing, nuclear export, translation, degradation, and microRNA processing. These processes determine the expression or inactivation of specific genes, which is vital for growth and development. (PMID: 30416848; PMID: 24662220; PMID: 30429466)

## Validation Data:

### m6A Rabbit Mab[M6A0] Images



Dot Blot analysis of total RNA extracted from HeLa(m6A).Using m6A Rabbit Mab[M6A0] at dilution of 1:1000 incubated at 4°

View more information on <http://naturebios.com>

**IMPORTANT:** For western blots, incubate membrane with diluted primary antibody in 1% w/v Milk, 1X TBST at 4°C overnight.