

SLC40A1 Mouse mAb [sleI]

Cat NO. :A74092

Information:

Applications	Reactivity:	UniProt ID:	MW(kDa)	Host	Isotype	Size
WB	Human	Q9NP59	63kDa	Mouse	IgG	50ul,100ul,200ul

Applications detail:

Application	Dilution
WB	1:1000-2000
The optimal dilutions should be determined by the end user	

Conjugate:

UnConjugate

Form:

Liquid

sensitivity:

Endogenous

Purification:

Protein A affinity purified.

Specificity:

Antibody is produced by immunizing animals with A synthesized peptide derived from human SLC40A1

Storage buffer and conditions :

Antibody store in 10 mM PBS, 0.5mg/ml BSA, 50% glycerol (buffer) .

Shipped at 4°C. Store at-20°C or -80°C.

Products are valid for one natural year of receipt.Avoid repeated freeze / thaw cycles.

Tissue specificity:

Detected in erythrocytes (at protein level). Expressed in placenta, intestine, muscle and spleen..

Subcellular location:

Cell membrane,Multi-pass membrane protein.

Function:

Major iron transporter that plays a key role in balancing cellular and systemic iron levels (PubMed:29237594, PubMed:22682227, PubMed:15692071). Transports iron from intestinal, splenic, and hepatic cells into the blood to provide iron to other tissues (By similarity). Controls therefore dietary iron uptake, iron recycling by macrophages, and release of iron stores in hepatocytes (By similarity). When iron is in excess, hepcidin/HAMP levels increase resulting in a degradation of ferroportin/SLC40A1 limiting the iron efflux to plasma (PubMed:22682227, PubMed:29237594, PubMed:32814342)..

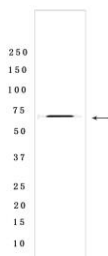
Introduction: **WB:** Western Blot **IP:** Immunoprecipitation **IHC:** Immunohistochemistry **ChIP:** Chromatin Immunoprecipitation **ICC/IF:** Immunocytochemistry/Immunofluorescence **F:** Flow Cytometry

Cross Reactivity: **H:** human **M:** mouse **R:** rat **Hm:** hamster **Mk:** monkey **Vir:** virus **Mi:** mink **C:** chicken **Dm** D. melanogaster **X:** Xenopus **Z:** zebrafish **B:** bovine **Dg:** dog **Pg:** pig **Hr:** horse

For Research Use Only. Not For Use In Diagnostic Procedures.

Validation Data:

SLC40A1 Mouse mAb [slel] Images



Western blot (SDS PAGE) analysis of extracts from A375 cells lysates. Using SLC40A1 Mouse mAb [slel] at dilution of 1:1000 incubated at 4°C over night.

View more information on <http://naturebios.com>

IMPORTANT: For western blots, incubate membrane with diluted primary antibody in 1% w/v Milk, 1X TBST at 4°C overnight.