

**CEACAM6 Rabbit mAb [g1VK]**

**Cat NO. :A12705**

**Information:**

Applications	Reactivity:	UniProt ID:	MW(kDa)	Host	Isotype	Size
WB IHC ICC IP	Human,Mouse,R at	P40199	37kDa	Rabbit	IgG	50ul,100ul,200ul

**Applications detail:**

Application	Dilution
WB	1:1000-2000
IHC	1:100
The optimal dilutions should be determined by the end user	

**Conjugate:**

UnConjugate

**Form:**

Liquid

**sensitivity:**

Endogenous

**Purification:**

Affinity-chromatography

**Specificity:**

Antibody is produced by immunizing animals with A synthesized peptide derived from human CEACAM6

**Storage buffer and conditions:**

Antibody store in 10 mM PBS, 0.5mg/ml BSA, 50% glycerol (buffer) .

Shipped at 4°C. Store at-20°C or -80°C.

Products are valid for one natural year of receipt.Avoid repeated freeze / thaw cycles.

**Tissue specificity:**

Expressed in neutrophils (PubMed:1378450). Expressed in columnar epithelial and goblet cells of the colon (PubMed:10436421). Expressed in numerous tumor cell lines (at protein level)

**Subcellular location:**

Cell membrane,Lipid-anchor, GPI-anchor. Apical cell membrane. Cell surface.

**Function:**

**Introduction:** **WB:** Western Blot **IP:** Immunoprecipitation **IHC:** Immunohistochemistry **ChIP:** Chromatin Immunoprecipitation **ICC/IF:** Immunocytochemistry/Immunofluorescence **F:** Flow Cytometry

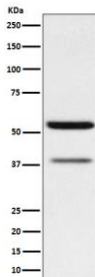
**Cross Reactivity:** **H:** human **M:** mouse **R:** rat **Hm:** hamster **Mk:** monkey **Vr:** virus **Ml:** mink **C:** chicken **Dm** D. melanogaster **X:** Xenopus **Z:** zebrafish **B:** bovine  
**Dg:** dog **Pg:** pig **Hr:** horse

**For Research Use Only. Not For Use In Diagnostic Procedures.**

Cell surface glycoprotein that plays a role in cell adhesion and tumor progression (PubMed:2803308, PubMed:2022629, PubMed:1378450, PubMed:8776764, PubMed:11590190, PubMed:10910050, PubMed:14724575, PubMed:16204051). Intercellular adhesion occurs in a calcium- and fibronectin-independent manner (PubMed:2022629, PubMed:16204051). Mediates homophilic and heterophilic cell adhesion with other carcinoembryonic antigen-related cell adhesion molecules, such as CEACAM5 and CEACAM8 (PubMed:2803308, PubMed:2022629, PubMed:8776764, PubMed:11590190, PubMed:16204051). Heterophilic interaction with CEACAM8 occurs in activated neutrophils (PubMed:8776764). Plays a role in neutrophil adhesion to cytokine-activated endothelial cells (PubMed:1378450). Plays a role as an oncogene by promoting tumor progression, positively regulates cell migration, cell adhesion to endothelial cells and cell invasion (PubMed:16204051). Also involved in the metastatic cascade process by inducing gain resistance to anoikis of pancreatic adenocarcinoma and colorectal carcinoma cells (PubMed:10910050, PubMed:14724575)..

## Validation Data:

### CEACAM6 Rabbit mAb [g1VK] Images



Western blot ( SDS PAGE ) analysis of extracts from MCF7 cell lysate.Using CEACAM6 Rabbit mAb [g1VK]at dilution of 1:1000 incubated at 4°C over night.

View more information on <http://naturebios.com>

**IMPORTANT:** For western blots, incubate membrane with diluted primary antibody in 1% w/v Milk, 1X TBST at 4°C overnight.