

**Stromal interaction molecule 1 Rabbit mAb  
[94y2]**

**Cat NO. :A14551**

**Information:**

| Applications | Reactivity:         | UniProt ID: | MW(kDa) | Host   | Isotype | Size             |
|--------------|---------------------|-------------|---------|--------|---------|------------------|
| WB IHC IP    | Human,Mouse,R<br>at | Q13586      | 77kDa   | Rabbit | IgG     | 50ul,100ul,200ul |

**Applications detail:**

| Application                                                | Dilution    |
|------------------------------------------------------------|-------------|
| WB                                                         | 1:1000-2000 |
| IHC                                                        | 1:100       |
| The optimal dilutions should be determined by the end user |             |

**Conjugate:**

UnConjugate

**Form:**

Liquid

**sensitivity:**

Endogenous

**Purification:**

Affinity-chromatography

**Specificity:**

Antibody is produced by immunizing animals with A synthesized peptide derived from human Stromal interaction molecule 1

**Storage buffer and conditions:**

Antibody store in 10 mM PBS, 0.5mg/ml BSA, 50% glycerol (buffer) .

Shipped at 4°C. Store at -20°C or -80°C.

Products are valid for one natural year of receipt.Avoid repeated freeze / thaw cycles.

**Tissue specificity:**

Ubiquitously expressed in various human primary cells and tumor cell lines..

**Subcellular location:**

Cell membrane,Single-pass type I membrane protein. Endoplasmic reticulum membrane,Single-pass type I membrane protein. Cytoplasm, cytoskeleton. Sarcoplasmic reticulum.

**Function:**

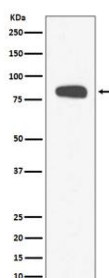
**Introduction:** **WB:** Western Blot **IP:** Immunoprecipitation **IHC:** Immunohistochemistry **ChIP:** Chromatin Immunoprecipitation **ICC/IF:** Immunocytochemistry/Immunofluorescence **F:** Flow Cytometry

**Cross Reactivity:** **H:** human **M:** mouse **R:** rat **Hm:** hamster **Mk:** monkey **Vr:** virus **Ml:** mink **C:** chicken **Dm** D. melanogaster **X:** Xenopus **Z:** zebrafish **B:** bovine  
**Dg:** dog **Pg:** pig **Hr:** horse

Plays a role in mediating store-operated Ca(2+) entry (SOCE), a Ca(2+) influx following depletion of intracellular Ca(2+) stores (PubMed:15866891, PubMed:16005298, PubMed:16208375, PubMed:16537481, PubMed:16733527, PubMed:16766533, PubMed:16807233, PubMed:18854159, PubMed:19249086, PubMed:22464749, PubMed:24069340, PubMed:24351972, PubMed:24591628, PubMed:26322679, PubMed:25326555, PubMed:28219928). Acts as Ca(2+) sensor in the endoplasmic reticulum via its EF-hand domain. Upon Ca(2+) depletion, translocates from the endoplasmic reticulum to the plasma membrane where it activates the Ca(2+) release-activated Ca(2+) (CRAC) channel subunit ORAI1 (PubMed:16208375, PubMed:16537481). Involved in enamel formation (PubMed:24621671). Activated following interaction with STIMATE, leading to promote STIM1 conformational switch (PubMed:26322679)..

## Validation Data:

### Stromal interaction molecule 1 Rabbit mAb [94y2] Images



Western blot ( SDS PAGE ) analysis of extracts from HeLa cell lysate.Using Stromal interaction molecule 1 Rabbit mAb [94y2]at dilution of 1:1000 incubated at 4°C over night.

View more information on <http://naturebios.com>

**IMPORTANT:** For western blots, incubate membrane with diluted primary antibody in 1% w/v Milk, 1X TBST at 4°C overnight.