

PGC1 beta Rabbit mAb [YOTG]

Cat NO. :A19420

Information:

Applications	Reactivity:	UniProt ID:	MW(kDa)	Host	Isotype	Size
WB IP	Human,Mouse,R at	Q86YN6	113kDa	Rabbit	IgG	50ul,100ul,200ul

Applications detail:

Application	Dilution
WB	1:1000-2000
The optimal dilutions should be determined by the end user	

Conjugate:

UnConjugate

Form:

Liquid

sensitivity:

Endogenous

Purification:

Affinity-chromatography

Specificity:

Antibody is produced by immunizing animals with A synthesized peptide derived from human PGC1 beta

Storage buffer and conditions:

Antibody store in 10 mM PBS, 0.5mg/ml BSA, 50% glycerol (buffer) .

Shipped at 4°C. Store at-20°C or -80°C.

Products are valid for one natural year of receipt.Avoid repeated freeze / thaw cycles.

Tissue specificity:

Ubiquitous with higher expression in heart, brain and skeletal muscle..

Subcellular location:

Nucleus.

Function:

Introduction: **WB:** Western Blot **IP:** Immunoprecipitation **IHC:** Immunohistochemistry **ChIP:** Chromatin Immunoprecipitation **ICC/IF:** Immunocytochemistry/Immunofluorescence **F:** Flow Cytometry

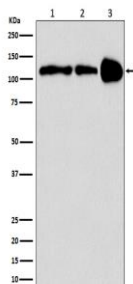
Cross Reactivity: **H:** human **M:** mouse **R:** rat **Hm:** hamster **Mk:** monkey **Vr:** virus **Ml:** mink **C:** chicken **Dm** D. melanogaster **X:** Xenopus **Z:** zebrafish **B:** bovine
Dg: dog **Pg:** pig **Hr:** horse

For Research Use Only. Not For Use In Diagnostic Procedures.

Plays a role of stimulator of transcription factors and nuclear receptors activities. Activates transcriptional activity of estrogen receptor alpha, nuclear respiratory factor 1 (NRF1) and glucocorticoid receptor in the presence of glucocorticoids. May play a role in constitutive non-adrenergic-mediated mitochondrial biogenesis as suggested by increased basal oxygen consumption and mitochondrial number when overexpressed. May be involved in fat oxidation and non-oxidative glucose metabolism and in the regulation of energy expenditure. Induces the expression of PERM1 in the skeletal muscle in an ESRRA-dependent manner..

Validation Data:

PGC1 beta Rabbit mAb [YOTG] Images



Western blot (SDS PAGE) analysis of extracts from (1) HeLa cell lysate; (2) Mouse spleen lysate; (3) Rat spleen lysate. Using PGC1 beta Rabbit mAb [YOTG] at dilution of 1:1000 incubated at 4°C over night.

View more information on <http://naturebios.com>

IMPORTANT: For western blots, incubate membrane with diluted primary antibody in 1% w/v Milk, 1X TBST at 4°C overnight.