

**KRAS+HRAS+NRAS Rabbit mAb [pUDw]**

**Cat NO. :A29158**

**Information:**

Applications	Reactivity:	UniProt ID:	MW(kDa)	Host	Isotype	Size
WB ICC/IF IP FC	Human,Mouse,R at	P01111/P01112/P01116	21kDa	Rabbit	IgG	50ul,100ul,200ul

**Applications detail:**

Application	Dilution
WB	1:1000-2000
ICC/IF	1:100
The optimal dilutions should be determined by the end user	

**Conjugate:**

UnConjugate

**Form:**

Liquid

**sensitivity:**

Endogenous

**Purification:**

Affinity-chromatography

**Specificity:**

Antibody is produced by immunizing animals with A synthesized peptide derived from human KRAS+HRAS+NRAS

**Storage buffer and conditions:**

Antibody store in 10 mM PBS, 0.5mg/ml BSA, 50% glycerol (buffer) .

Shipped at 4°C. Store at-20°C or -80°C.

Products are valid for one natural year of receipt.Avoid repeated freeze / thaw cycles.

**Tissue specificity:**

**Subcellular location:**

Cell membrane,Lipid-anchor,Cytoplasmic side. Golgi apparatus membrane,Lipid-anchor.

**Function:**

**Introduction:** **WB:** Western Blot **IP:** Immunoprecipitation **IHC:** Immunohistochemistry **ChIP:** Chromatin Immunoprecipitation **ICC/IF:** Immunocytochemistry/Immunofluorescence **F:** Flow Cytometry

**Cross Reactivity:** **H:** human **M:** mouse **R:** rat **Hm:** hamster **Mk:** monkey **Vr:** virus **Ml:** mink **C:** chicken **Dm** D. melanogaster **X:** Xenopus **Z:** zebrafish **B:** bovine  
**Dg:** dog **Pg:** pig **Hr:** horse

**For Research Use Only. Not For Use In Diagnostic Procedures.**

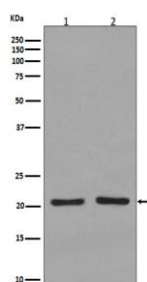
---

Ras proteins bind GDP/GTP and possess intrinsic GTPase activity..

## Validation Data:

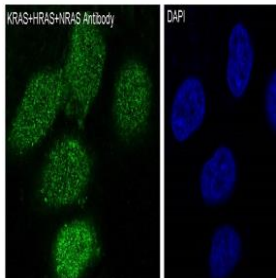
### KRAS+HRAS+NRAS Rabbit mAb [pUDw] Images

---



Western blot (SDS PAGE) analysis of extracts from (1) 293T cell lysate;  
(2) C6 cell lysate.Using KRAS+HRAS+NRAS Rabbit mAb [pUDw]at  
dilution of 1:1000 incubated at 4°C over night.

View more information on <http://naturebios.com>



Immunofluorescent analysis of HeLa cells, Using KRAS+HRAS+NRAS Rabbit mAb [pUDw] at dilution of 1:100 incubated at 4°C over night.

**IMPORTANT:** For western blots, incubate membrane with diluted primary antibody in 1% w/v Milk, 1X TBST at 4°C overnight.

For Research Use Only. Not For Use In Diagnostic Procedures.