

SOX18 Rabbit mAb [RUrF]

Cat NO. :A34861

Information:

Applications	Reactivity:	UniProt ID:	MW(kDa)	Host	Isotype	Size
WB IHC	Human	P35713	41kDa	Rabbit	IgG	50ul,100ul,200ul

Applications detail:

Application	Dilution
WB	1:1000-2000
IHC	1:100
The optimal dilutions should be determined by the end user	

Conjugate:

UnConjugate

Form:

Liquid

sensitivity:

Endogenous

Purification:

Affinity-chromatography

Specificity:

Antibody is produced by immunizing animals with A synthesized peptide derived from human SOX18

Storage buffer and conditions :

Antibody store in 10 mM PBS, 0.5mg/ml BSA, 50% glycerol (buffer) .

Shipped at 4°C. Store at-20°C or -80°C.

Products are valid for one natural year of receipt.Avoid repeated freeze / thaw cycles.

Tissue specificity:

Detected in heart, lung, placenta, skeletal muscle, liver, kidney, spleen, prostate, ovary, msosmall intestine and colon..

Subcellular location:

Nucleus.

Function:

Introduction: **WB:** Western Blot **IP:** Immunoprecipitation **IHC:** Immunohistochemistry **ChIP:** Chromatin Immunoprecipitation **ICC/IF:** Immunocytochemistry/Immunofluorescence **F:** Flow Cytometry

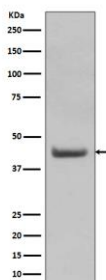
Cross Reactivity: **H:** human **M:** mouse **R:** rat **Hm:** hamster **Mk:** monkey **Vir:** virus **Ml:** mink **C:** chicken **Dm** D. melanogaster **X:** Xenopus **Z:** zebrafish **B:** bovine **Dg:** dog **Pg:** pig **Hr:** horse

For Research Use Only. Not For Use In Diagnostic Procedures.

Transcriptional activator that binds to the consensus sequence 5'-AACAAAG-3' in the promoter of target genes and plays an essential role in embryonic cardiovascular development and lymphangiogenesis. Activates transcription of PROX1 and other genes coding for lymphatic endothelial markers. Plays an essential role in triggering the differentiation of lymph vessels, but is not required for the maintenance of differentiated lymphatic endothelial cells. Plays an important role in postnatal angiogenesis, where it is functionally redundant with SOX17. Interaction with MEF2C enhances transcriptional activation. Besides, required for normal hair development..

Validation Data:

SOX18 Rabbit mAb [RUrF] Images



Western blot (SDS PAGE) analysis of extracts from (1) K562 cell lysate; (2) human stomach lysate. Using SOX18 Rabbit mAb [RUrF] at dilution of 1:1000 incubated at 4°C over night.

View more information on <http://naturebios.com>

IMPORTANT: For western blots, incubate membrane with diluted primary antibody in 1% w/v Milk, 1X TBST at 4°C overnight.