

STAT6 Rabbit mAb [LDx5]

Cat NO. :A45122

Information:

| Applications | Reactivity: | UniProt ID: | MW(kDa) | Host | Isotype | Size |
|--------------|-------------|-------------|---------|--------|---------|------------------|
| WB ICC/IF FC | Human | P42226 | 94kDa | Rabbit | IgG | 50ul,100ul,200ul |

Applications detail:

| Application | Dilution |
|--|-------------|
| WB | 1:1000-2000 |
| ICC/IF | 1:100 |
| The optimal dilutions should be determined by the end user | |

Conjugate:

UnConjugate

Form:

Liquid

sensitivity:

Endogenous

Purification:

Affinity-chromatography

Specificity:

Antibody is produced by immunizing animals with A synthesized peptide derived from human STAT6

Storage buffer and conditions :

Antibody store in 10 mM PBS, 0.5mg/ml BSA, 50% glycerol (buffer) .

Shipped at 4°C. Store at -20°C or -80°C.

Products are valid for one natural year of receipt.Avoid repeated freeze / thaw cycles.

Tissue specificity:

Subcellular location:

Cytoplasm. Nucleus.

Function:

Carries out a dual signal transduction and activation of transcription. Involved in IL4/interleukin-4- and IL3/interleukin-3-mediated signaling..

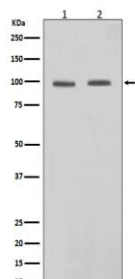
Introduction: **WB:** Western Blot **IP:** Immunoprecipitation **IHC:** Immunohistochemistry **ChIP:** Chromatin Immunoprecipitation **ICC/IF:** Immunocytochemistry/Immunofluorescence **F:** Flow Cytometry

Cross Reactivity: **H:** human **M:** mouse **R:** rat **Hm:** hamster **Mk:** monkey **Vir:** virus **Mi:** mink **C:** chicken **Dm** D. melanogaster **X:** Xenopus **Z:** zebrafish **B:** bovine **Dg:** dog **Pg:** pig **Hr:** horse

For Research Use Only. Not For Use In Diagnostic Procedures.

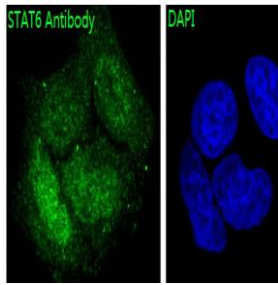
Validation Data:

STAT6 Rabbit mAb [LDx5] Images



Western blot (SDS PAGE) analysis of extracts from expression (1)Daudi cell lysate;(2)HeLa cell lysate.Using STAT6 Rabbit mAb [LDx5]at dilution of 1:1000 incubated at 4℃ over night.

View more information on <http://naturebios.com>



Immunofluorescent analysis of HeLa cells, Using STAT6 Rabbit mAb [LDx5] at dilution of 1:100 incubated at 4°C over night.

IMPORTANT: For western blots, incubate membrane with diluted primary antibody in 1% w/v Milk, 1X TBST at 4°C overnight.

For Research Use Only. Not For Use In Diagnostic Procedures.