

CHD1L Rabbit mAb [czEO]

Cat NO. :A46726

Information:

Applications	Reactivity:	UniProt ID:	MW(kDa)	Host	Isotype	Size
WB IHC ICC/IF IP FC	Human Mouse	Q86WJ1	101kDa	Rabbit	IgG	50ul,100ul,200ul

Applications detail:

Application	Dilution
WB	1:1000-2000
IHC	1:100
ICC/IF	1:100
The optimal dilutions should be determined by the end user	

Conjugate:

UnConjugate

Form:

Liquid

sensitivity:

Endogenous

Purification:

Affinity-chromatography

Specificity:

Antibody is produced by immunizing animals with A synthesized peptide derived from human CHD1L

Storage buffer and conditions:

Antibody store in 10 mM PBS, 0.5mg/ml BSA, 50% glycerol (buffer) .

Shipped at 4°C. Store at-20°C or -80°C.

Products are valid for one natural year of receipt.Avoid repeated freeze / thaw cycles.

Tissue specificity:

Frequently overexpressed in hepatomacellular carcinomas..

Subcellular location:

Nucleus.

Function:

Introduction: **WB:** Western Blot **IP:** Immunoprecipitation **IHC:** Immunohistochemistry **ChIP:** Chromatin Immunoprecipitation **ICC/IF:** Immunocytochemistry/
Immunofluorescence **F:** Flow Cytometry

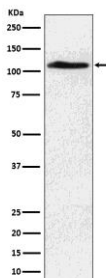
Cross Reactivity: **H:** human **M:** mouse **R:** rat **Hm:** hamster **Mk:** monkey **Vr:** virus **Ml:** mink **C:** chicken **Dm** D. melanogaster **X:** Xenopus **Z:** zebrafish **B:** bovine
Dg: dog **Pg:** pig **Hr:** horse

For Research Use Only. Not For Use In Diagnostic Procedures.

DNA helicase which plays a role in chromatin-remodeling following DNA damage (PubMed:19661379, PubMed:29220653). Targeted to sites of DNA damage through interaction with poly(ADP-ribose) and functions to regulate chromatin during DNA repair (PubMed:19661379). Able to catalyze nucleosome sliding in an ATP-dependent manner (PubMed:19661379). Helicase activity is strongly stimulated upon poly(ADP-ribose)-binding (PubMed:19661379, PubMed:29220653)..

Validation Data:

CHD1L Rabbit mAb [czEO] Images



Western blot (SDS PAGE) analysis of extracts from A549 cell lysate.Using CHD1L Rabbit mAb [czEO]at dilution of 1:1000 incubated at 4°C over night.

View more information on <http://naturebios.com>

IMPORTANT: For western blots, incubate membrane with diluted primary antibody in 1% w/v Milk, 1X TBST at 4°C overnight.