

**GATA1 Rabbit mAb [1BKZ]**

**Cat NO. :A48010**

**Information:**

Applications	Reactivity:	UniProt ID:	MW(kDa)	Host	Isotype	Size
WB IHC ICC/IF IP CHIP	Human	P15976	43kDa	Rabbit	IgG	50ul,100ul,200ul

**Applications detail:**

Application	Dilution
WB	1:1000-2000
IHC	1:100
ICC/IF	1:100
The optimal dilutions should be determined by the end user	

**Conjugate:**

UnConjugate

**Form:**

Liquid

**sensitivity:**

Endogenous

**Purification:**

Affinity-chromatography

**Specificity:**

Antibody is produced by immunizing animals with A synthesized peptide derived from human GATA1

**Storage buffer and conditions:**

Antibody store in 10 mM PBS, 0.5mg/ml BSA, 50% glycerol (buffer) .

Shipped at 4°C. Store at-20°C or -80°C.

Products are valid for one natural year of receipt.Avoid repeated freeze / thaw cycles.

**Tissue specificity:**

Erythrocytes..

**Subcellular location:**

Nucleus.

**Function:**

**Introduction:** **WB:** Western Blot **IP:** Immunoprecipitation **IHC:** Immunohistochemistry **ChIP:** Chromatin Immunoprecipitation **ICC/IF:** Immunocytochemistry/Immunofluorescence **F:** Flow Cytometry

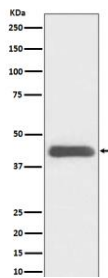
**Cross Reactivity:** **H:** human **M:** mouse **R:** rat **Hm:** hamster **Mk:** monkey **Vr:** virus **Ml:** mink **C:** chicken **Dm** D. melanogaster **X:** Xenopus **Z:** zebrafish **B:** bovine  
**Dg:** dog **Pg:** pig **Hr:** horse

**For Research Use Only. Not For Use In Diagnostic Procedures.**

Transcriptional activator or repressor which probably serves as a general switch factor for erythroid development. It binds to DNA sites with the consensus sequence 5'-[AT]GATA[AG]-3' within regulatory regions of globin genes and of other genes expressed in erythroid cells. Activates the transcription of genes involved in erythroid differentiation of K562 erythroleukemia cells, including HBB, HBG1/2, ALAS2 and HMBS (PubMed:24245781)..

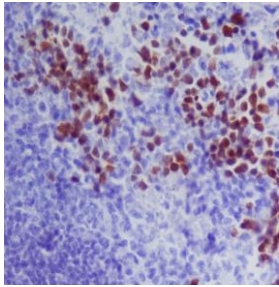
## Validation Data:

### GATA1 Rabbit mAb [1BKZ] Images



Western blot ( SDS PAGE ) analysis of extracts from K562 cell lysate.Using GATA1 Rabbit mAb [1BKZ]at dilution of 1:1000 incubated at 4°C over night.

View more information on <http://naturebios.com>



Immunohistochemical analysis of paraffin-embedded mouse spleen, .Using GATA1 Rabbit mAb [1BKZ] at dilution of 1:100 incubated at 4°C over night. Perform heat mediated antigen retrieval before commencing with IHC staining protocol.

**IMPORTANT:** For western blots, incubate membrane with diluted primary antibody in 1% w/v Milk, 1X TBST at 4°C overnight.