

Cytokeratin 6 Rabbit mAb [U3UW]

Cat NO. :A57492

Information:

| Applications | Reactivity: | UniProt ID: | MW(kDa) | Host | Isotype | Size |
|---------------|-------------|-------------|---------|--------|---------|------------------|
| WB IHC ICC/IF | Human | P02538 | 60kDa | Rabbit | IgG | 50ul,100ul,200ul |

Applications detail:

| Application | Dilution |
|------------------------------------------------------------|-------------|
| WB | 1:1000-2000 |
| IHC | 1:100 |
| ICC/IF | 1:100 |
| The optimal dilutions should be determined by the end user | |

Conjugate:

UnConjugate

Form:

Liquid

sensitivity:

Endogenous

Purification:

Affinity-chromatography

Specificity:

Antibody is produced by immunizing animals with A synthesized peptide derived from human Cytokeratin 6

Storage buffer and conditions :

Antibody store in 10 mM PBS, 0.5mg/ml BSA, 50% glycerol (buffer) .

Shipped at 4°C. Store at-20°C or -80°C.

Products are valid for one natural year of receipt.Avoid repeated freeze / thaw cycles.

Tissue specificity:

Expressed in the corneal epithelium (at protein level)..

Subcellular location:

Function:

Epidermis-specific type I keratin involved in wound healing. Involved in the activation of follicular keratinocytes after wounding, while it does not play a major role in keratinocyte proliferation or migration. Participates in the regulation of epithelial migration by inhibiting the activity of SRC during wound repair..

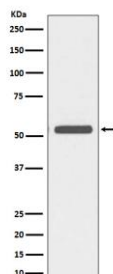
Introduction: **WB:** Western Blot **IP:** Immunoprecipitation **IHC:** Immunohistochemistry **ChIP:** Chromatin Immunoprecipitation **ICC/IF:** Immunocytochemistry/Immunofluorescence **F:** Flow Cytometry

Cross Reactivity: **H:** human **M:** mouse **R:** rat **Hm:** hamster **Mk:** monkey **Vr:** virus **Ml:** mink **C:** chicken **Dm** D. melanogaster **X:** Xenopus **Z:** zebrafish **B:** bovine **Dg:** dog **Pg:** pig **Hr:** horse

For Research Use Only. Not For Use In Diagnostic Procedures.

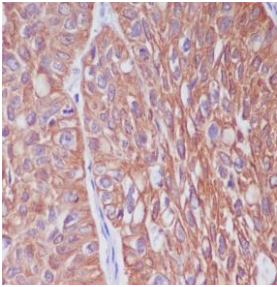
Validation Data:

Cytokeratin 6 Rabbit mAb [U3UW] Images



Western blot (SDS PAGE) analysis of extracts from A431 cell lysate.Using Cytokeratin 6 Rabbit mAb [U3UW]at dilution of 1:1000 incubated at 4°C over night.

View more information on <http://naturebios.com>



Immunohistochemical analysis of paraffin-embedded human lung cancer, .Using Cytokeratin 6 Rabbit mAb [U3UW] at dilution of 1:100 incubated at 4 °C over night. Perform heat mediated antigen retrieval before commencing with IHC staining protocol.

IMPORTANT: For western blots, incubate membrane with diluted primary antibody in 1% w/v Milk, 1X TBST at 4°C overnight.