

**beta I Tubulin Rabbit mAb [3hSd]**

**Cat NO. :A59768**

**Information:**

| Applications     | Reactivity:                           | UniProt ID: | MW(kDa) | Host   | Isotype | Size             |
|------------------|---------------------------------------|-------------|---------|--------|---------|------------------|
| WB IHC ICC/IF FC | Human,Mouse,R<br>at Cow Dog<br>Monkey | Q9H4B7      | 50kDa   | Rabbit | IgG     | 50ul,100ul,200ul |

**Applications detail:**

| Application  | Dilution    |
|--|-------------|
| WB   | 1:1000-2000 |
| IHC  | 1:100       |
| ICC/IF   | 1:100       |
| The optimal dilutions should be determined by the end user |             |

**Conjugate:**

UnConjugate

**Form:**

Liquid

**sensitivity:**

Endogenous

**Purification:**

Affinity-chromatography

**Specificity:**

Antibody is produced by immunizing animals with A synthesized peptide derived from human beta I Tubulin

**Storage buffer and conditions:**

Antibody store in 10 mM PBS, 0.5mg/ml BSA, 50% glycerol (buffer) .

Shipped at 4°C. Store at -20°C or -80°C.

Products are valid for one natural year of receipt.Avoid repeated freeze / thaw cycles.

**Tissue specificity:**

Hematopoietic cell-specific. Major isotype in leukocytes, where it represents 50% of all beta-tubulins..

**Subcellular location:**

Cytoplasm, cytoskeleton.

**Function:**

**Introduction:** **WB:** Western Blot **IP:** Immunoprecipitation **IHC:** Immunohistochemistry **ChIP:** Chromatin Immunoprecipitation **ICC/IF:** Immunocytochemistry/Immunofluorescence **F:** Flow Cytometry

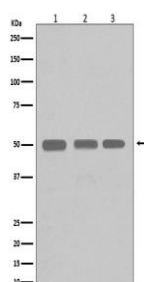
**Cross Reactivity:** **H:** human **M:** mouse **R:** rat **Hm:** hamster **Mk:** monkey **Vir:** virus **Ml:** mink **C:** chicken **Dm** D. melanogaster **X:** Xenopus **Z:** zebrafish **B:** bovine  
**Dg:** dog **Pg:** pig **Hr:** horse

**For Research Use Only. Not For Use In Diagnostic Procedures.**

Tubulin is the major constituent of microtubules. It binds two moles of GTP, one at an exchangeable site on the beta chain and one at a non-exchangeable site on the alpha chain (By similarity)..

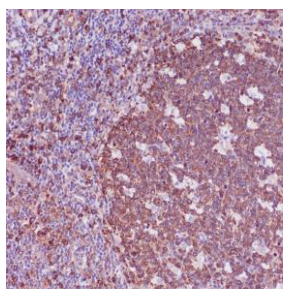
## Validation Data:

### beta I Tubulin Rabbit mAb [3hSd] Images

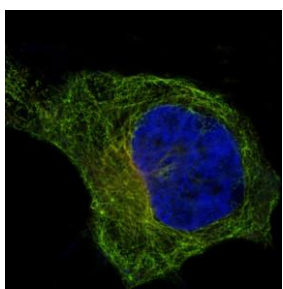


Western blot (SDS PAGE) analysis of extracts from(1) K562 cell lysate; (2) Jurkat cell lysate; (3) HeLa cell lysate; (4) 293T cell lysate .Using beta I Tubulin Rabbit mAb [3hSd]at dilution of 1:1000 incubated at 4°C over night.

View more information on <http://naturebios.com>



Immunohistochemical analysis of paraffin-embedded human tonsil, .Using beta I Tubulin Rabbit mAb [3hSd] at dilution of 1:100 incubated at 4°C over night.Perform heat mediated antigen retrieval before commencing with IHC staining protocol.



Immunofluorescent analysis of HeLa cells,Using beta I Tubulin Rabbit mAb [3hSd] at dilution of 1:100 incubated at 4°C over night.

**IMPORTANT:** For western blots, incubate membrane with diluted primary antibody in 1% w/v Milk, 1X TBST at 4°C overnight.