

PAX5 Rabbit mAb [gOQ5]

Cat NO. :A71402

Information:

Applications	Reactivity:	UniProt ID:	MW(kDa)	Host	Isotype	Size
WB IHC ICC/IF FC	Human Mouse	Q02548	45kDa	Rabbit	IgG	50ul,100ul,200ul

Applications detail:

Application	Dilution
WB	1:1000-2000
IHC	1:100
ICC/IF	1:100
The optimal dilutions should be determined by the end user	

Conjugate:

UnConjugate

Form:

Liquid

sensitivity:

Endogenous

Purification:

Affinity-chromatography

Specificity:

Antibody is produced by immunizing animals with A synthesized peptide derived from human PAX5

Storage buffer and conditions :

Antibody store in 10 mM PBS, 0.5mg/ml BSA, 50% glycerol (buffer) .

Shipped at 4°C. Store at -20°C or -80°C.

Products are valid for one natural year of receipt.Avoid repeated freeze / thaw cycles.

Tissue specificity:

Subcellular location:

Nucleus.

Function:

Transcription factor that plays an essential role in commitment of lymphoid progenitors to the B-lymphocyte lineage (PubMed:10811620, PubMed:27181361). Fulfills a dual role by repressing B-lineage inappropriate genes and simultaneously activating B-lineage-specific genes (PubMed:10811620, PubMed:27181361). In turn, regulates cell adhesion and migration, induces V(H)-to-D(H)J(H) recombination, facilitates pre-B-cell receptor signaling and promotes development to the mature B-cell stage (PubMed:32612238). Repression of the cohesin-release factor WAPL causes global changes of the chromosomal architecture in pro-B cells to facilitate the generation of a diverse antibody repertoire (PubMed:32612238).., (Microbial infection) Plays an essential role in

Introduction: **WB:** Western Blot **IP:** Immunoprecipitation **IHC:** Immunohistochemistry **ChIP:** Chromatin Immunoprecipitation **ICC/IF:** Immunocytochemistry/Immunofluorescence **F:** Flow Cytometry

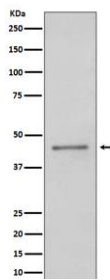
Cross Reactivity: **H:** human **M:** mouse **R:** rat **Hm:** hamster **Mk:** monkey **Vr:** virus **Ml:** mink **C:** chicken **Dm** D. melanogaster **X:** Xenopus **Z:** zebrafish **B:** bovine **Dg:** dog **Pg:** pig **Hr:** horse

For Research Use Only. Not For Use In Diagnostic Procedures.

the maintenance of Epstein-Barr virus genome copy number within the host cell by promoting EBNA1/oriP-dependent binding and transcription (PubMed:31941781). Participates also in the inhibition of lytic EBV reactivation by modulating viral BZLF1 activity (PubMed:23678172)..

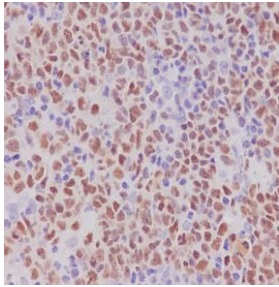
Validation Data:

PAX5 Rabbit mAb [gOQ5] Images

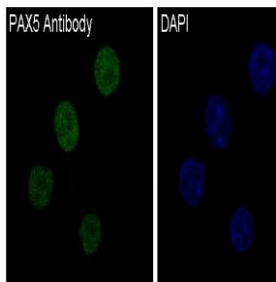


Western blot (SDS PAGE) analysis of extracts from Ramos cell lysate.Using PAX5 Rabbit mAb [gOQ5]at dilution of 1:1000 incubated at 4℃ over night.

View more information on <http://naturebios.com>



Immunohistochemical analysis of paraffin-embedded human tonsil, .Using PAX5 Rabbit mAb [gOQ5] at dilution of 1:100 incubated at 4 °C over night.Perform heat mediated antigen retrieval before commencing with IHC staining protocol.



Immunofluorescent analysis of Ramos cells,Using PAX5 Rabbit mAb [gOQ5] at dilution of 1:100 incubated at 4 °C over night.

IMPORTANT: For western blots, incubate membrane with diluted primary antibody in 1% w/v Milk, 1X TBST at 4°C overnight.