

CABP Rabbit mAb [QxvD]

Cat NO. :A72062

Information:

Applications	Reactivity:	UniProt ID:	MW(kDa)	Host	Isotype	Size
WB	Human Mouse	Q9NZU7	45kDa	Rabbit	IgG	50ul,100ul,200ul

Applications detail:

Application	Dilution
WB	1:1000-2000
The optimal dilutions should be determined by the end user	

Conjugate:

UnConjugate

Form:

Liquid

sensitivity:

Endogenous

Purification:

Affinity-chromatography

Specificity:

Antibody is produced by immunizing animals with A synthesized peptide derived from human CABP

Storage buffer and conditions :

Antibody store in 10 mM PBS, 0.5mg/ml BSA, 50% glycerol (buffer) .

Shipped at 4°C. Store at-20°C or -80°C.

Products are valid for one natural year of receipt.Avoid repeated freeze / thaw cycles.

Tissue specificity:

Retina and brain. Somatodendritic compartment of neurons. Calbrain was found exclusively in brain where it is abundant in the hippocampus, habenular area in the epithalamus and in the cerebellum.

Subcellular location:

Cytoplasm, cytoskeleton. Cytoplasm, perinuclear region. Cell membrane,Lipid-anchor,Cytoplasmic side. Golgi apparatus. Cell junction, synapse, postsynaptic density.

Function:

Introduction: **WB:** Western Blot **IP:** Immunoprecipitation **IHC:** Immunohistochemistry **ChIP:** Chromatin Immunoprecipitation **ICC/IF:** Immunocytochemistry/Immunofluorescence **F:** Flow Cytometry

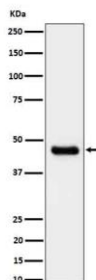
Cross Reactivity: **H:** human **M:** mouse **R:** rat **Hm:** hamster **Mk:** monkey **Vir:** virus **Ml:** mink **C:** chicken **Dm** D. melanogaster **X:** Xenopus **Z:** zebrafish **B:** bovine **Dg:** dog **Pg:** pig **Hr:** horse

For Research Use Only. Not For Use In Diagnostic Procedures.

Modulates calcium-dependent activity of inositol 1,4,5-triphosphate receptors (ITPRs)(PubMed:14570872). Inhibits agonist-induced intracellular calcium signaling (PubMed:15980432). Enhances inactivation and does not support calcium-dependent facilitation of voltage-dependent P/Q-type calcium channels (PubMed:11865310). Causes calcium-dependent facilitation and inhibits inactivation of L-type calcium channels by binding to the same sites as calmodulin in the C-terminal domain of CACNA1C, but has an opposite effect on channel function (PubMed:15140941). Suppresses the calcium-dependent inactivation of CACNA1D (By similarity). Inhibits TRPC5 channels (PubMed:15895247). Prevents NMDA receptor-induced cellular degeneration. Required for the normal transfer of light signals through the retina (By similarity)..

Validation Data:

CABP Rabbit mAb [QxvD] Images



Western blot (SDS PAGE) analysis of extracts from U-87 MG cell lysate.Using CABP Rabbit mAb [QxvD]at dilution of 1:1000 incubated at 4°C over night.

View more information on <http://naturebios.com>

IMPORTANT: For western blots, incubate membrane with diluted primary antibody in 1% w/v Milk, 1X TBST at 4°C overnight.