

**Dopamine Transporter Rabbit mAb [Ymer]**

**Cat NO. :A72446**

**Information:**

Applications	Reactivity:	UniProt ID:	MW(kDa)	Host	Isotype	Size
WB IP FC	Human	Q01959	50kDa	Rabbit	IgG	50ul,100ul,200ul

**Applications detail:**

Application	Dilution
WB	1:1000-2000
The optimal dilutions should be determined by the end user	

**Conjugate:**

UnConjugate

**Form:**

Liquid

**sensitivity:**

Endogenous

**Purification:**

Affinity-chromatography

**Specificity:**

Antibody is produced by immunizing animals with A synthesized peptide derived from human Dopamine Transporter

**Storage buffer and conditions :**

Antibody store in 10 mM PBS, 0.5mg/ml BSA, 50% glycerol (buffer) .

Shipped at 4°C. Store at-20°C or -80°C.

Products are valid for one natural year of receipt.Avoid repeated freeze / thaw cycles.

**Tissue specificity:**

Highly expressed in substantia nigra (PubMed:7637582). Expressed in axonal varicosities in dopaminergic nerve terminals (at protein level) (PubMed:17296554). Expressed in the striatum (at protein

**Subcellular location:**

Cell membrane,Multi-pass membrane protein. Cell projection, neuron projection. Cell projection, axon.

**Function:**

**Introduction:** **WB:** Western Blot **IP:** Immunoprecipitation **IHC:** Immunohistochemistry **ChIP:** Chromatin Immunoprecipitation **ICC/IF:** Immunocytochemistry/Immunofluorescence **F:** Flow Cytometry

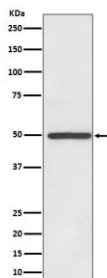
**Cross Reactivity:** **H:** human **M:** mouse **R:** rat **Hm:** hamster **Mk:** monkey **Vr:** virus **Ml:** mink **C:** chicken **Dm** D. melanogaster **X:** Xenopus **Z:** zebrafish **B:** bovine **Dg:** dog **Pg:** pig **Hr:** horse

**For Research Use Only. Not For Use In Diagnostic Procedures.**

Amine transporter (PubMed:1406597, PubMed:8302271, PubMed:15505207). Terminates the action of dopamine by its high affinity sodium-dependent reuptake into presynaptic terminals (By similarity). Regulator of light-dependent retinal hyaloid vessel regression, downstream of OPN5 signaling (By similarity)..

## Validation Data:

### Dopamine Transporter Rabbit mAb [Ymer] Images



Western blot ( SDS PAGE ) analysis of extracts from HeLa cell lysate.Using Dopamine Transporter Rabbit mAb [Ymer]at dilution of 1:1000 incubated at 4°C over night.

View more information on <http://naturebios.com>

**IMPORTANT:** For western blots, incubate membrane with diluted primary antibody in 1% w/v Milk, 1X TBST at 4°C overnight.