

TGFBI Rabbit mAb [84k1]

Cat NO. :A76105

Information:

Applications	Reactivity:	UniProt ID:	MW(kDa)	Host	Isotype	Size
WB IHC ICC/IF	Human,Mouse,R at	Q15582	68kDa	Rabbit	IgG	50ul,100ul,200ul

Applications detail:

Application	Dilution
WB	1:1000-2000
IHC	1:100
ICC/IF	1:100
The optimal dilutions should be determined by the end user	

Conjugate:

UnConjugate

Form:

Liquid

sensitivity:

Endogenous

Purification:

Affinity-chromatography

Specificity:

Antibody is produced by immunizing animals with A synthesized peptide derived from human TGFBI

Storage buffer and conditions:

Antibody store in 10 mM PBS, 0.5mg/ml BSA, 50% glycerol (buffer) .

Shipped at 4°C. Store at-20°C or -80°C.

Products are valid for one natural year of receipt.Avoid repeated freeze / thaw cycles.

Tissue specificity:

Highly expressed in the corneal epithelium (PubMed:27609313, PubMed:8077289). Expressed in heart, placenta, lung, liver, skeletal muscle, kidney and pancreas (PubMed:8077289)..

Subcellular location:

Secreted. Secreted, extracellular space, extracellular matrix.

Function:

Introduction: **WB:** Western Blot **IP:** Immunoprecipitation **IHC:** Immunohistochemistry **ChIP:** Chromatin Immunoprecipitation **ICC/IF:** Immunocytochemistry/Immunofluorescence **F:** Flow Cytometry

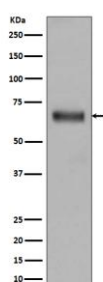
Cross Reactivity: **H:** human **M:** mouse **R:** rat **Hm:** hamster **Mk:** monkey **Vr:** virus **Ml:** mink **C:** chicken **Dm** D. melanogaster **X:** Xenopus **Z:** zebrafish **B:** bovine **Dg:** dog **Pg:** pig **Hr:** horse

For Research Use Only. Not For Use In Diagnostic Procedures.

Plays a role in cell adhesion (PubMed:8024701). May play a role in cell-collagen interactions (By similarity)..

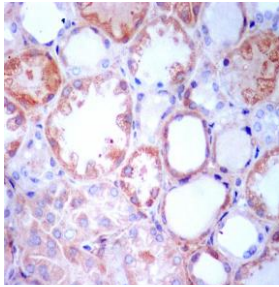
Validation Data:

TGFBI Rabbit mAb [84k1] Images



Western blot (SDS PAGE) analysis of extracts from Human fetal kidney lysate. Using TGFBI Rabbit mAb [84k1] at dilution of 1:1000 incubated at 4°C over night.

View more information on <http://naturebios.com>



Immunohistochemical analysis of paraffin-embedded human kidney, .Using TGFBI Rabbit mAb [84k1] at dilution of 1:100 incubated at 4 °C over night. Perform heat mediated antigen retrieval before commencing with IHC staining protocol.

Immunofluorescent analysis of MCF-7 cells, Using TGFBI Rabbit mAb [84k1] at dilution of 1:100 incubated at 4 °C over night.

IMPORTANT: For western blots, incubate membrane with diluted primary antibody in 1% w/v Milk, 1X TBST at 4°C overnight.