

**Tau Rabbit mAb [WlcW]**

**Cat NO. :A77304**

**Information:**

Applications	Reactivity:	UniProt ID:	MW(kDa)	Host	Isotype	Size
WB ICC/IF FC	Human,Mouse,R at	P10636	50-80kDa	Rabbit	IgG	50ul,100ul,200ul

**Applications detail:**

Application	Dilution
WB	1:1000-2000
ICC/IF	1:100
The optimal dilutions should be determined by the end user	

**Conjugate:**

UnConjugate

**Form:**

Liquid

**sensitivity:**

Endogenous

**Purification:**

Affinity-chromatography

**Specificity:**

Antibody is produced by immunizing animals with A synthesized peptide derived from human Tau

**Storage buffer and conditions:**

Antibody store in 10 mM PBS, 0.5mg/ml BSA, 50% glycerol (buffer) .

Shipped at 4°C. Store at-20°C or -80°C.

Products are valid for one natural year of receipt.Avoid repeated freeze / thaw cycles.

**Tissue specificity:**

Expressed in neurons. Isoform PNS-tau is expressed in the peripheral nervous system while the others are expressed in the central nervous system.

**Subcellular location:**

Cytoplasm, cytosol. Cell membrane,Peripheral membrane protein,Cytoplasmic side. Cytoplasm, cytoskeleton. Cell projection, axon. Cell projection, dendrite. Secreted.

**Function:**

**Introduction:** **WB:** Western Blot **IP:** Immunoprecipitation **IHC:** Immunohistochemistry **ChIP:** Chromatin Immunoprecipitation **ICC/IF:** Immunocytochemistry/Immunofluorescence **F:** Flow Cytometry

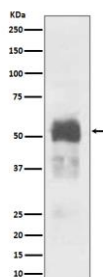
**Cross Reactivity:** **H:** human **M:** mouse **R:** rat **Hm:** hamster **Mk:** monkey **Vr:** virus **Ml:** mink **C:** chicken **Dm** D. melanogaster **X:** Xenopus **Z:** zebrafish **B:** bovine **Dg:** dog **Pg:** pig **Hr:** horse

**For Research Use Only. Not For Use In Diagnostic Procedures.**

Promotes microtubule assembly and stability, and might be involved in the establishment and maintenance of neuronal polarity (PubMed:21985311). The C-terminus binds axonal microtubules while the N-terminus binds neural plasma membrane components, suggesting that tau functions as a linker protein between both (PubMed:21985311, PubMed:32961270). Axonal polarity is predetermined by TAU/MAPT localization (in the neuronal cell) in the domain of the cell body defined by the centrosome. The short isoforms allow plasticity of the cytoskeleton whereas the longer isoforms may preferentially play a role in its stabilization..

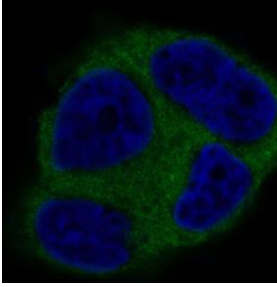
## Validation Data:

### Tau Rabbit mAb [W1cW] Images



Western blot ( SDS PAGE ) analysis of extracts from Mouse brain lysate.Using Tau Rabbit mAb [W1cW]at dilution of 1:1000 incubated at 4℃ over night.

View more information on <http://naturebios.com>



Immunofluorescent analysis of T-47D cells, Using Tau Rabbit mAb [W1cW] at dilution of 1:100 incubated at 4°C over night.

**IMPORTANT:** For western blots, incubate membrane with diluted primary antibody in 1% w/v Milk, 1X TBST at 4°C overnight.