

**Bid Rabbit mAb [m73M]**

**Cat NO. :A77957**

**Information:**

Applications	Reactivity:	UniProt ID:	MW(kDa)	Host	Isotype	Size
WB IHC ICC/IF IP FC	Human	P55957	22kDa	Rabbit	IgG	50ul,100ul,200ul

**Applications detail:**

Application	Dilution
WB	1:1000-2000
IHC	1:100
ICC/IF	1:100
The optimal dilutions should be determined by the end user	

**Conjugate:**

UnConjugate

**Form:**

Liquid

**sensitivity:**

Endogenous

**Purification:**

Affinity-chromatography

**Specificity:**

Antibody is produced by immunizing animals with A synthesized peptide derived from human Bid

**Storage buffer and conditions:**

Antibody store in 10 mM PBS, 0.5mg/ml BSA, 50% glycerol (buffer) .

Shipped at 4°C. Store at-20°C or -80°C.

Products are valid for one natural year of receipt.Avoid repeated freeze / thaw cycles.

**Tissue specificity:**

[Isoform 2]: Expressed in spleen, pancreas and placenta (at protein level)...[Isoform 3]: Expressed in lung, pancreas and spleen (at protein level)...[Isoform 4]: Expressed in lung and pancreas (at

**Subcellular location:**

Cytoplasm. Mitochondrion membrane. Mitochondrion outer membrane.

**Function:**

**Introduction:** **WB:** Western Blot **IP:** Immunoprecipitation **IHC:** Immunohistochemistry **ChIP:** Chromatin Immunoprecipitation **ICC/IF:** Immunocytochemistry/Immunofluorescence **F:** Flow Cytometry

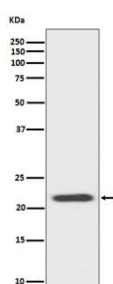
**Cross Reactivity:** **H:** human **M:** mouse **R:** rat **Hm:** hamster **Mk:** monkey **Vr:** virus **Ml:** mink **C:** chicken **Dm** D. melanogaster **X:** Xenopus **Z:** zebrafish **B:** bovine  
**Dg:** dog **Pg:** pig **Hr:** horse

**For Research Use Only. Not For Use In Diagnostic Procedures.**

Induces caspases and apoptosis (PubMed:14583606). Counters the protective effect of BCL2 (By similarity)..., [BH3-interacting domain death agonist p15]: Induces caspase activation and apoptosis (PubMed:15661737, PubMed:32029622). Allows the release of cytochrome c (PubMed:32029622)..., [Isoform 1]: Induces ICE-like proteases and apoptosis..., [Isoform 2]: Induces ICE-like proteases and apoptosis..., [Isoform 3]: Does not induce apoptosis..., [Isoform 4]: Induces ICE-like proteases and apoptosis..

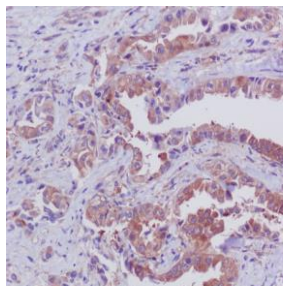
## Validation Data:

### Bid Rabbit mAb [m73M] Images

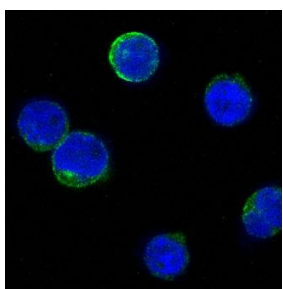


Western blot ( SDS PAGE ) analysis of extracts from Jurkat cell lysate.Using Bid Rabbit mAb [m73M]at dilution of 1:1000 incubated at 4°C over night.

View more information on <http://naturebios.com>



Immunohistochemical analysis of paraffin-embedded human lung, .Using Bid Rabbit mAb [m73M] at dilution of 1:100 incubated at 4 °C over night.Perform heat mediated antigen retrieval before commencing with IHC staining protocol.



Immunofluorescent analysis of Jurkat cells,Using Bid Rabbit mAb [m73M] at dilution of 1:100 incubated at 4°C over night.

**IMPORTANT:** For western blots, incubate membrane with diluted primary antibody in 1% w/v Milk, 1X TBST at 4°C overnight.