

PDE2A Rabbit mAb [Oknu]

Cat NO. :A85808

Information:

Applications	Reactivity:	UniProt ID:	MW(kDa)	Host	Isotype	Size
WB	Human,Mouse,R at	O00408	106kDa	Rabbit	IgG	50ul,100ul,200ul

Applications detail:

Application	Dilution
WB	1:1000-2000
The optimal dilutions should be determined by the end user	

Conjugate:

UnConjugate

Form:

Liquid

sensitivity:

Endogenous

Purification:

Affinity-chromatography

Specificity:

Antibody is produced by immunizing animals with A synthesized peptide derived from human PDE2A

Storage buffer and conditions:

Antibody store in 10 mM PBS, 0.5mg/ml BSA, 50% glycerol (buffer) .

Shipped at 4°C. Store at-20°C or -80°C.

Products are valid for one natural year of receipt.Avoid repeated freeze / thaw cycles.

Tissue specificity:

Widely expressed (PubMed:9210593, PubMed:29392776). Expressed in brain, with high expression observed in the corpus striatum (PubMed:29392776). Also expressed in heart, placenta, lung, skeletal

Subcellular location:

[Isoform PDE2A3]: Cell membrane,Lipid-anchor.,[Isoform PDE2A2]: Mitochondrion matrix. Mitochondrion inner membrane. Mitochondrion outer membrane.,[Isoform PDE2A1]: Cytoplasm.,[Isoform 5]:

Function:

Introduction: **WB:** Western Blot **IP:** Immunoprecipitation **IHC:** Immunohistochemistry **ChIP:** Chromatin Immunoprecipitation **ICC/IF:** Immunocytochemistry/Immunofluorescence **F:** Flow Cytometry

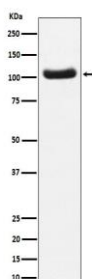
Cross Reactivity: **H:** human **M:** mouse **R:** rat **Hm:** hamster **Mk:** monkey **Vr:** virus **Ml:** mink **C:** chicken **Dm** D. melanogaster **X:** Xenopus **Z:** zebrafish **B:** bovine **Dg:** dog **Pg:** pig **Hr:** horse

For Research Use Only. Not For Use In Diagnostic Procedures.

cGMP-activated cyclic nucleotide phosphodiesterase with a dual-specificity for the second messengers cAMP and cGMP, which are key regulators of many important physiological processes (PubMed:9210593, PubMed:29392776, PubMed:15938621). Has a higher efficiency with cGMP compared to cAMP (PubMed:15938621). Plays a role in cell growth and migration (PubMed:24705027)..., [Isoform PDE2A2]: Regulates mitochondrial cAMP levels and respiration (By similarity). Involved in the regulation of mitochondria morphology/dynamics and apoptotic cell death via local modulation of cAMP/PKA signaling in the mitochondrion, including the monitoring of local cAMP levels at the outer mitochondrial membrane and of PKA-dependent phosphorylation of DNM1L (PubMed:28463107)..

Validation Data:

PDE2A Rabbit mAb [Oknu] Images



Western blot (SDS PAGE) analysis of extracts from Human fetal brain lysate. Using PDE2A Rabbit mAb [Oknu] at dilution of 1:1000 incubated at 4°C over night.

View more information on <http://naturebios.com>

IMPORTANT: For western blots, incubate membrane with diluted primary antibody in 1% w/v Milk, 1X TBST at 4°C overnight.