

Wilms Tumor Protein Rabbit mAb [VjD0]

Cat NO. :A89070

Information:

| Applications | Reactivity: | UniProt ID: | MW(kDa) | Host | Isotype | Size |
|------------------|-------------|-------------|---------|--------|---------|------------------|
| WB IHC ICC/IF FC | Human Mouse | P19544 | 55kDa | Rabbit | IgG | 50ul,100ul,200ul |

Applications detail:

| Application | Dilution |
|--|-------------|
| WB | 1:1000-2000 |
| IHC | 1:100 |
| ICC/IF | 1:100 |
| The optimal dilutions should be determined by the end user | |

Conjugate:

UnConjugate

Form:

Liquid

sensitivity:

Endogenous

Purification:

Affinity-chromatography

Specificity:

Antibody is produced by immunizing animals with A synthesized peptide derived from human Wilms Tumor Protein

Storage buffer and conditions :

Antibody store in 10 mM PBS, 0.5mg/ml BSA, 50% glycerol (buffer) .

Shipped at 4°C. Store at -20°C or -80°C.

Products are valid for one natural year of receipt.Avoid repeated freeze / thaw cycles.

Tissue specificity:

Expressed in the kidney and a subset of hematopoietic cells.

Subcellular location:

Nucleus. Nucleus, nucleolus. Cytoplasm.

Function:

Transcription factor that plays an important role in cellular development and cell survival (PubMed:7862533). Recognizes and binds to the DNA sequence 5'-GCG(T/G)GGGCG-3' (PubMed:7862533, PubMed:17716689, PubMed:25258363). Regulates the expression of numerous target genes, including EPO. Plays an essential role for development of the urogenital system. It has a tumor suppressor as well as an oncogenic role in tumor formation. Function may be isoform-specific: isoforms lacking the KTS motif may act as transcription factors (PubMed:15520190). Isoforms containing the KTS motif may bind mRNA and play a role in mRNA metabolism or splicing (PubMed:16934801). Isoform 1 has lower affinity for DNA, and can bind RNA (PubMed:19123921)..

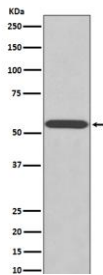
Introduction: **WB:** Western Blot **IP:** Immunoprecipitation **IHC:** Immunohistochemistry **ChIP:** Chromatin Immunoprecipitation **ICC/IF:** Immunocytochemistry/Immunofluorescence **F:** Flow Cytometry

Cross Reactivity: **H:** human **M:** mouse **R:** rat **Hm:** hamster **Mk:** monkey **Vr:** virus **Ml:** mink **C:** chicken **Dm** D. melanogaster **X:** Xenopus **Z:** zebrafish **B:** bovine **Dg:** dog **Pg:** pig **Hr:** horse

For Research Use Only. Not For Use In Diagnostic Procedures.

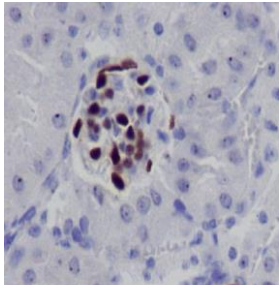
Validation Data:

Wilms Tumor Protein Rabbit mAb [VjD0] Images



Western blot (SDS PAGE) analysis of extracts from K562 cell lysate.Using Wilms Tumor Protein Rabbit mAb [VjD0]at dilution of 1:1000 incubated at 4°C over night.

View more information on <http://naturebios.com>



Immunohistochemical analysis of paraffin-embedded mouse kidney, .Using Wilms Tumor Protein Rabbit mAb [VJD0] at dilution of 1:100 incubated at 4 °C over night. Perform heat mediated antigen retrieval before commencing with IHC staining protocol.

IMPORTANT: For western blots, incubate membrane with diluted primary antibody in 1% w/v Milk, 1X TBST at 4°C overnight.