

**AZI2 Rabbit mAb [710K]**

**Cat NO. :A91412**

**Information:**

Applications	Reactivity:	UniProt ID:	MW(kDa)	Host	Isotype	Size
WB ICC/IF	Human,Mouse,R at	Q9H6S1	45kDa	Rabbit	IgG	50ul,100ul,200ul

**Applications detail:**

Application	Dilution
WB	1:1000-2000
ICC/IF	1:100
The optimal dilutions should be determined by the end user	

**Conjugate:**

UnConjugate

**Form:**

Liquid

**sensitivity:**

Endogenous

**Purification:**

Affinity-chromatography

**Specificity:**

Antibody is produced by immunizing animals with A synthesized peptide derived from human AZI2

**Storage buffer and conditions:**

Antibody store in 10 mM PBS, 0.5mg/ml BSA, 50% glycerol (buffer) .

Shipped at 4°C. Store at-20°C or -80°C.

Products are valid for one natural year of receipt.Avoid repeated freeze / thaw cycles.

**Tissue specificity:**

Widely expressed (PubMed:14560022). Abundant expression seen in the pancreas and testis (PubMed:14560022)..

**Subcellular location:**

Cytoplasm.

**Function:**

**Introduction:** **WB:** Western Blot **IP:** Immunoprecipitation **IHC:** Immunohistochemistry **ChIP:** Chromatin Immunoprecipitation **ICC/IF:** Immunocytochemistry/Immunofluorescence **F:** Flow Cytometry

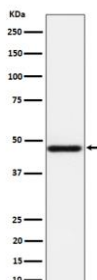
**Cross Reactivity:** **H:** human **M:** mouse **R:** rat **Hm:** hamster **Mk:** monkey **Vr:** virus **Ml:** mink **C:** chicken **Dm** D. melanogaster **X:** Xenopus **Z:** zebrafish **B:** bovine **Dg:** dog **Pg:** pig **Hr:** horse

**For Research Use Only. Not For Use In Diagnostic Procedures.**

Adapter protein which binds TBK1 and IKKε playing a role in antiviral innate immunity (PubMed:14560022, PubMed:21931631). Activates serine/threonine-protein kinase TBK1 and facilitates its oligomerization (PubMed:14560022, PubMed:21931631). Enhances the phosphorylation of NF-kappa-B p65 subunit RELA by TBK1 (PubMed:14560022, PubMed:21931631). Promotes TBK1-induced as well as TNF-alpha or PMA-induced activation of NF-kappa-B (PubMed:14560022, PubMed:21931631). Participates in IFNβ promoter activation via TICAM1 (PubMed:15611223)..

## Validation Data:

### AZI2 Rabbit mAb [710K] Images



Western blot ( SDS PAGE ) analysis of extracts from HeLa cell lysate.Using AZI2 Rabbit mAb [710K]at dilution of 1:1000 incubated at 4°C over night.

View more information on <http://naturebios.com>

**IMPORTANT:** For western blots, incubate membrane with diluted primary antibody in 1% w/v Milk, 1X TBST at 4°C overnight.