

CRISPR-Cas9 SA Rabbit mAb [Ppv8]

Cat NO. :A92756

Information:

Applications	Reactivity:	UniProt ID:	MW(kDa)	Host	Isotype	Size
WB IHC ICC/IF IP FC	Staphylococcus aureus	J7RUA5	124kDa	Rabbit	IgG	50ul,100ul,200ul

Applications detail:

Application	Dilution
WB	1:1000-2000
IHC	1:100
ICC/IF	1:100
The optimal dilutions should be determined by the end user	

Conjugate:

UnConjugate

Form:

Liquid

sensitivity:

Endogenous

Purification:

Affinity-chromatography

Specificity:

Antibody is produced by immunizing animals with A synthesized peptide derived from CRISPR-Cas9 SA

Storage buffer and conditions:

Antibody store in 10 mM PBS, 0.5mg/ml BSA, 50% glycerol (buffer) .

Shipped at 4°C. Store at-20°C or -80°C.

Products are valid for one natural year of receipt.Avoid repeated freeze / thaw cycles.

Tissue specificity:

Subcellular location:

Function:

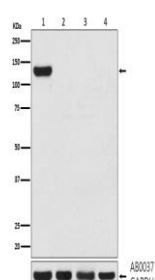
Introduction: **WB:** Western Blot **IP:** Immunoprecipitation **IHC:** Immunohistochemistry **ChIP:** Chromatin Immunoprecipitation **ICC/IF:** Immunocytochemistry/ Immunofluorescence **F:** Flow Cytometry

Cross Reactivity: **H:** human **M:** mouse **R:** rat **Hm:** hamster **Mk:** monkey **Vr:** virus **Ml:** mink **C:** chicken **Dm** D. melanogaster **X:** Xenopus **Z:** zebrafish **B:** bovine **Dg:** dog **Pg:** pig **Hr:** horse

For Research Use Only. Not For Use In Diagnostic Procedures.

Validation Data:

CRISPR-Cas9 SA Rabbit mAb [Ppv8] Images



Western blot (SDS PAGE) analysis of extracts from (1) 293T cell lysate transfected with CRISPR-Cas9 SA; (2) 293T cell lysate; (3) 3T3 cell lysate; (4) PC12 cell lysate. Using CRISPR-Cas9 SA Rabbit mAb [Ppv8] at dilution of 1:1000 incubated at 4°C over night.

View more information on <http://naturebios.com>

Immunofluorescent analysis of 293T cells transfected with CRISPR-Cas9 SA, Using CRISPR-Cas9 SA Rabbit mAb [Ppv8] at dilution of 1:100 incubated at 4°C over night.

IMPORTANT: For western blots, incubate membrane with diluted primary antibody in 1% w/v Milk, 1X TBST at 4°C overnight.

For Research Use Only. Not For Use In Diagnostic Procedures.