

Galectin 8 Rabbit mAb [4W6M]

Cat NO. :A97812

Information:

Applications	Reactivity:	UniProt ID:	MW(kDa)	Host	Isotype	Size
WB IHC ICC/IF IP FC	Human	O00214	40kDa	Rabbit	IgG	50ul,100ul,200ul

Applications detail:

Application	Dilution
WB	1:1000-2000
IHC	1:100
ICC/IF	1:100
The optimal dilutions should be determined by the end user	

Conjugate:

UnConjugate

Form:

Liquid

sensitivity:

Endogenous

Purification:

Affinity-chromatography

Specificity:

Antibody is produced by immunizing animals with A synthesized peptide derived from human Galectin 8

Storage buffer and conditions:

Antibody store in 10 mM PBS, 0.5mg/ml BSA, 50% glycerol (buffer) .

Shipped at 4°C. Store at-20°C or -80°C.

Products are valid for one natural year of receipt.Avoid repeated freeze / thaw cycles.

Tissue specificity:

Ubiquitous. Selective expression by prostate carcinomas versus normal prostate and benign prostatic hypertrophy.

Subcellular location:

Cytoplasmic vesicle. Cytoplasm, cytosol.

Function:

Introduction: **WB:** Western Blot **IP:** Immunoprecipitation **IHC:** Immunohistochemistry **ChIP:** Chromatin Immunoprecipitation **ICC/IF:** Immunocytochemistry/ Immunofluorescence **F:** Flow Cytometry

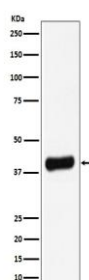
Cross Reactivity: **H:** human **M:** mouse **R:** rat **Hm:** hamster **Mk:** monkey **Vr:** virus **Ml:** mink **C:** chicken **Dm** D. melanogaster **X:** Xenopus **Z:** zebrafish **B:** bovine **Dg:** dog **Pg:** pig **Hr:** horse

For Research Use Only. Not For Use In Diagnostic Procedures.

Beta-galactoside-binding lectin that acts as a sensor of membrane damage caused by infection and restricts the proliferation of infecting pathogens by targeting them for autophagy (PubMed:22246324, PubMed:28077878). Detects membrane rupture by binding beta-galactoside ligands located on the luminal side of the endosome membrane, these ligands becoming exposed to the cytoplasm following rupture (PubMed:22246324, PubMed:28077878). Restricts infection by initiating autophagy via interaction with CALCOCO2/NDP52 (PubMed:22246324, PubMed:28077878). Required to restrict infection of bacterial invasion such as *S.typhimurium* (PubMed:22246324). Also required to restrict infection of Picornaviridae viruses (PubMed:28077878). Has a marked preference for 3'-O-sialylated and 3'-O-sulfated glycans (PubMed:21288902)..

Validation Data:

Galectin 8 Rabbit mAb [4W6M] Images



Western blot (SDS PAGE) analysis of extracts from LNCaP cell lysate.Using Galectin 8 Rabbit mAb [4W6M]at dilution of 1:1000 incubated at 4°C over night.

View more information on <http://naturebios.com>

IMPORTANT: For western blots, incubate membrane with diluted primary antibody in 1% w/v Milk, 1X TBST at 4°C overnight.