

**MYO19 Rabbit mAb [63LV]**

**Cat NO. :A98105**

**Information:**

Applications	Reactivity:	UniProt ID:	MW(kDa)	Host	Isotype	Size
WB ICC/IF	Human	Q96H55	100kDa	Rabbit	IgG	50ul,100ul,200ul

**Applications detail:**

Application	Dilution
WB	1:1000-2000
ICC/IF	1:100
The optimal dilutions should be determined by the end user	

**Conjugate:**

UnConjugate

**Form:**

Liquid

**sensitivity:**

Endogenous

**Purification:**

Affinity-chromatography

**Specificity:**

Antibody is produced by immunizing animals with A synthesized peptide derived from human MYO19

**Storage buffer and conditions:**

Antibody store in 10 mM PBS, 0.5mg/ml BSA, 50% glycerol (buffer) .

Shipped at 4°C. Store at -20°C or -80°C.

Products are valid for one natural year of receipt.Avoid repeated freeze / thaw cycles.

**Tissue specificity:**

Widely expressed in multiple tissues and cell lines..

**Subcellular location:**

Mitochondrion outer membrane,Peripheral membrane protein. Cytoplasm, cytoskeleton.

**Function:**

Actin-based motor molecule with ATPase activity that localizes to the mitochondrion outer membrane (PubMed:19932026, PubMed:23568824, PubMed:25447992). Motor protein that moves towards the plus-end of actin filaments (By similarity). Required for mitochondrial inheritance during mitosis (PubMed:25447992). May be involved in mitochondrial transport or positioning (PubMed:23568824)..

**Introduction:** **WB:** Western Blot **IP:** Immunoprecipitation **IHC:** Immunohistochemistry **ChIP:** Chromatin Immunoprecipitation **ICC/IF:** Immunocytochemistry/Immunofluorescence **F:** Flow Cytometry

**Cross Reactivity:** **H:** human **M:** mouse **R:** rat **Hm:** hamster **Mk:** monkey **Vir:** virus **Mi:** mink **C:** chicken **Dm** D. melanogaster **X:** Xenopus **Z:** zebrafish **B:** bovine **Dg:** dog **Pg:** pig **Hr:** horse

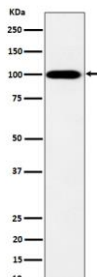
**For Research Use Only. Not For Use In Diagnostic Procedures.**

---

**Validation Data:**

**MYO19 Rabbit mAb [63LV] Images**

---



Western blot ( SDS PAGE ) analysis of extracts from K562 cell lysate.Using MYO19 Rabbit mAb [63LV]at dilution of 1:1000 incubated at 4°C over night.

View more information on <http://naturebios.com>

**IMPORTANT:** For western blots, incubate membrane with diluted primary antibody in 1% w/v Milk, 1X TBST at 4°C overnight.