

GSDMA Rabbit mAb [J52V]

Cat NO. :A10956

Information:

Applications	Reactivity:	UniProt ID:	MW(kDa)	Host	Isotype	Size
WB	H,M,R	Q96QA5	50 kDa	Rabbit	IgG	100ul,200ul

Applications detail:

Application	Dilution
WB	1:1000-2000
The optimal dilutions should be determined by the end user	

Conjugate:

UnConjugate

Form:

Liquid

sensitivity:

Endogenous

Purification:

Protein A purification

Specificity:

Antibody is produced by immunizing animals with a synthetic peptide at the sequence of human GSDMA

Storage buffer and conditions:

Antibody store in 10 mM PBS, 0.5mg/ml BSA, 50% glycerol (buffer) .

Shipped at 4°C. Store at-20°C or -80°C.

Products are valid for one natural year of receipt.Avoid repeated freeze / thaw cycles.

Tissue specificity:

Expressed predominantly in the gastrointestinal tract and, at a lower level, in the skin. Also detected in mammary gland. In the gastrointestinal tract, mainly expressed in differentiated cells,

Subcellular location:

[Gasdermin-A]: Cytoplasm, perinuclear region. Cytoplasm, cytosol.,[Gasdermin-A, N-terminal]: Cell membrane,Multi-pass membrane protein.

Function:

Introduction: **WB:** Western Blot **IP:** Immunoprecipitation **IHC:** Immunohistochemistry **ChIP:** Chromatin Immunoprecipitation **ICC/IF:** Immunocytochemistry/Immunofluorescence **F:** Flow Cytometry

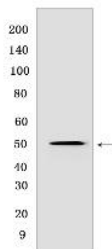
Cross Reactivity: **H:** human **M:** mouse **R:** rat **Hm:** hamster **Mk:** monkey **Vir:** virus **Ml:** mink **C:** chicken **Dm** D. melanogaster **X:** Xenopus **Z:** zebrafish **B:** bovine **Dg:** dog **Pg:** pig **Hr:** horse

For Research Use Only. Not For Use In Diagnostic Procedures.

[Gasdermin-A]: This form constitutes the precursor of the pore-forming protein: upon cleavage, the released N-terminal moiety (Gasdermin-A, N-terminal) binds to membranes and forms pores, triggering cell death...
[Gasdermin-A, N-terminal]: Pore-forming protein that causes membrane permeabilization and pyroptosis (PubMed:17471240, PubMed:27281216). Released upon cleavage in vitro of genetically engineered GSDMA, and binds to membrane inner leaflet lipids (PubMed:27281216). Homooligomerizes within the membrane and forms pores of 10-15 nanometers (nm) of inner diameter, triggering pyroptosis (PubMed:27281216). Binds to membrane inner leaflet lipids, such as phosphatidylinositol (4,5)-bisphosphate (PubMed:27281216). The functional mechanisms and physiological proteases that cleave and activate this pore-forming protein are unknown (PubMed:27281216)..

Validation Data:

GSDMA Rabbit mAb [J52V] Images



Western blot (SDS PAGE) analysis of extracts from HeLa cells transfected with mouse GSDMA2. Using GSDMA Rabbit mAb [J52V] at dilution of 1:1000 incubated

View more information on <http://naturebios.com>

IMPORTANT: For western blots, incubate membrane with diluted primary antibody in 1% w/v Milk, 1X TBST at 4°C overnight.