

**IER3IP1 Rabbit mAb [2592]**

**Cat NO. :A14373**

**Information:**

Applications	Reactivity:	UniProt ID:	MW(kDa)	Host	Isotype	Size
WB,IHC,ICC/IF	H	Q9Y5U9	11 kDa	Rabbit	IgG	100ul,200ul

**Applications detail:**

Application	Dilution
WB	1:1000-2000
IHC	1:100
ICC/IF	1:100
The optimal dilutions should be determined by the end user	

**Conjugate:**

UnConjugate

**Form:**

Liquid

**sensitivity:**

Endogenous

**Purification:**

Protein A purification

**Specificity:**

Antibody is produced by immunizing animals with a synthetic peptide at the sequence of human IER3IP1

**Storage buffer and conditions:**

Antibody store in 10 mM PBS, 0.5mg/ml BSA, 50% glycerol (buffer) .

Shipped at 4°C. Store at -20°C or -80°C.

Products are valid for one natural year of receipt.Avoid repeated freeze / thaw cycles.

**Tissue specificity:**

Highest levels in heart, skeletal muscle, and kidney..

**Subcellular location:**

Endoplasmic reticulum membrane,Multi-pass membrane protein.

**Function:**

Regulator of endoplasmic reticulum secretion that acts as a key determinant of brain size (PubMed:33122427). Required for secretion of extracellular matrix proteins (PubMed:33122427). Required for correct brain development by depositing sufficient extracellular matrix proteins for tissue integrity and the proliferation of neural progenitors (PubMed:33122427). Acts as a regulator of the unfolded protein response (UPR) (By similarity)..

**Introduction:** **WB:** Western Blot **IP:** Immunoprecipitation **IHC:** Immunohistochemistry **ChIP:** Chromatin Immunoprecipitation **ICC/IF:** Immunocytochemistry/Immunofluorescence **F:** Flow Cytometry

**Cross Reactivity:** **H:** human **M:** mouse **R:** rat **Hm:** hamster **Mk:** monkey **Vir:** virus **Ml:** mink **C:** chicken **Dm** D. melanogaster **X:** Xenopus **Z:** zebrafish **B:** bovine **Dg:** dog **Pg:** pig **Hr:** horse

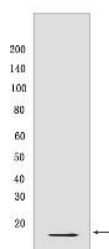
**For Research Use Only. Not For Use In Diagnostic Procedures.**

---

## Validation Data:

### IER3IP1 Rabbit mAb [2592] Images

---



Western blot ( SDS PAGE ) analysis of extracts from HepG2 cells. Using IER3IP1 Rabbit mAb [2592] at dilution of 1:1000 incubated at 4°C over night.

View more information on <http://naturebios.com>

**IMPORTANT:** For western blots, incubate membrane with diluted primary antibody in 1% w/v Milk, 1X TBST at 4°C overnight.