

TRAP/CD40L Rabbit mAb [S8O4]

Cat NO. :A18381

Information:

Applications	Reactivity:	UniProt ID:	MW(kDa)	Host	Isotype	Size
WB	H,M	P29965	36 kda	Rabbit	IgG	100ul,200ul

Applications detail:

Application	Dilution
WB	1:1000-2000
The optimal dilutions should be determined by the end user	

Conjugate:

UnConjugate

Form:

Liquid

sensitivity:

Endogenous

Purification:

Protein A purification

Specificity:

Antibody is produced by immunizing animals with a synthetic peptide of Human TRAP/CD40L.

Storage buffer and conditions:

Antibody store in 10 mM PBS, 0.5mg/ml BSA, 50% glycerol (buffer) .

Shipped at 4°C. Store at -20°C or -80°C.

Products are valid for one natural year of receipt.Avoid repeated freeze / thaw cycles.

Tissue specificity:

Specifically expressed on activated CD4+ T-lymphocytes.

Subcellular location:

Cell membrane,Single-pass type II membrane protein. Cell surface.,[CD40 ligand, soluble form]: Secreted.

Function:

Cytokine that acts as a ligand to CD40/TNFRSF5 (PubMed:1280226, PubMed:31331973). Costimulates T-cell proliferation and cytokine production (PubMed:8617933). Its cross-linking on T-cells generates a costimulatory signal which enhances the production of IL4 and IL10 in conjunction with the TCR/CD3 ligation and CD28 costimulation (PubMed:8617933). Induces the activation of NF-kappa-B (PubMed:15067037, PubMed:31331973). Induces the activation of kinases MAPK8 and PAK2 in T-cells (PubMed:15067037). Induces tyrosine phosphorylation of isoform 3 of CD28 (PubMed:15067037). Mediates B-cell proliferation in the absence of co-stimulus as well as IgE production in the presence of IL4 (By similarity). Involved in immunoglobulin class

Introduction: **WB:** Western Blot **IP:** Immunoprecipitation **IHC:** Immunohistochemistry **ChIP:** Chromatin Immunoprecipitation **ICC/IF:** Immunocytochemistry/Immunofluorescence **F:** Flow Cytometry

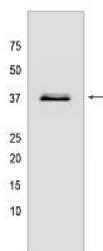
Cross Reactivity: **H:** human **M:** mouse **R:** rat **Hm:** hamster **Mk:** monkey **Vir:** virus **Ml:** mink **C:** chicken **Dm** D. melanogaster **X:** Xenopus **Z:** zebrafish **B:** bovine **Dg:** dog **Pg:** pig **Hr:** horse

For Research Use Only. Not For Use In Diagnostic Procedures.

switching (By similarity).. [CD40 ligand, soluble form]: Acts as a ligand for integrins, specifically ITGA5:ITGB1 and ITGAV:ITGB3, both integrins and the CD40 receptor are required for activation of CD40-CD40LG signaling, which have cell-type dependent effects, such as B-cell activation, NF-kappa-B signaling and anti-apoptotic signaling..

Validation Data:

TRAP/CD40L Rabbit mAb [S8O4] Images



Western blot (SDS PAGE) analysis of extracts from MOLT-4 cells lysates using TRAP/CD40L Rabbit mAb [S8O4] at dilution of 1:1000 incubated at 4°C over night

View more information on <http://naturebios.com>

IMPORTANT: For western blots, incubate membrane with diluted primary antibody in 1% w/v Milk, 1X TBST at 4°C overnight.