

**E2F6 Rabbit mAb [9234]**

**Cat NO. :A22248**

**Information:**

Applications	Reactivity:	UniProt ID:	MW(kDa)	Host	Isotype	Size
WB,ICC/IF	H	O75461	32 kDa	Rabbit	IgG	100ul,200ul

**Applications detail:**

Application	Dilution
WB	1:1000-2000
ICC/IF	1:100,
The optimal dilutions should be determined by the end user	

**Conjugate:**

UnConjugate

**Form:**

Liquid

**sensitivity:**

Endogenous

**Purification:**

Protein A purification

**Specificity:**

Antibody is produced by immunizing animals with a synthetic peptide of Human E2F6.

**Storage buffer and conditions:**

Antibody store in 10 mM PBS, 0.5mg/ml BSA, 50% glycerol (buffer) .

Shipped at 4°C. Store at -20°C or -80°C.

Products are valid for one natural year of receipt.Avoid repeated freeze / thaw cycles.

**Tissue specificity:**

Expressed in all tissues examined. Highest levels in placenta, skeletal muscle, heart, ovary, kidney, small intestine and spleen..

**Subcellular location:**

Nucleus.

**Function:**

**Introduction:** **WB:** Western Blot **IP:** Immunoprecipitation **IHC:** Immunohistochemistry **ChIP:** Chromatin Immunoprecipitation **ICC/IF:** Immunocytochemistry/Immunofluorescence **F:** Flow Cytometry

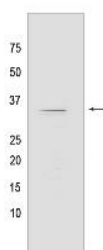
**Cross Reactivity:** **H:** human **M:** mouse **R:** rat **Hm:** hamster **Mk:** monkey **Vir:** virus **Ml:** mink **C:** chicken **Dm** D. melanogaster **X:** Xenopus **Z:** zebrafish **B:** bovine **Dg:** dog **Pg:** pig **Hr:** horse

**For Research Use Only. Not For Use In Diagnostic Procedures.**

Inhibitor of E2F-dependent transcription (PubMed:9689056, PubMed:9704927, PubMed:9501179). Binds DNA cooperatively with DP proteins through the E2 recognition site, 5'-TTTC[CG]CGC-3' (PubMed:9501179). Has a preference for the 5'-TTTCCCGC-3' E2F recognition site (PubMed:9501179). E2F6 lacks the transcriptional activation and pocket protein binding domains (PubMed:9704927, PubMed:9501179). Appears to regulate a subset of E2F-dependent genes whose products are required for entry into the cell cycle but not for normal cell cycle progression (PubMed:9689056, PubMed:9501179). Represses expression of some meiosis-specific genes, including SLC25A31/ANT4 (By similarity). May silence expression via the recruitment of a chromatin remodeling complex containing histone H3-K9 methyltransferase activity. Overexpression delays the exit of cells from the S-phase (PubMed:9501179)..

## Validation Data:

### E2F6 Rabbit mAb [9234] Images



Western blot (SDS PAGE) analysis of extracts from Jurkat cells lysates using E2F6 Rabbit mAb [9234] at dilution of 1:1000 incubated at 4°C overnight

View more information on <http://naturebios.com>

**IMPORTANT:** For western blots, incubate membrane with diluted primary antibody in 1% w/v Milk, 1X TBST at 4°C overnight.