

GSTO1 Rabbit mAb[PZ01]

Cat NO. :A25183

Information:

| Applications | Reactivity: | UniProt ID: | MW(kDa) | Host | Isotype | Size |
|--------------|-------------|-------------|---------|--------|---------|------------------|
| WB | H,R | P78417 | 28kDa | Rabbit | IgG | 50ul 100ul,200ul |

Applications detail:

| Application | Dilution |
|------------------------------------------------------------|-------------|
| WB | 1:1000-2000 |
| The optimal dilutions should be determined by the end user | |

Conjugate:

UnConjugate

Form:

Liquid

sensitivity:

Endogenous

Purification:

Protein A purification

Specificity:

Antibody is produced by immunizing animals with a synthetic peptide of human GSTO1.

Storage buffer and conditions:

Antibody store in 10 mM PBS, 0.5mg/ml BSA, 50% glycerol (buffer) .

Shipped at 4°C. Store at -20°C or -80°C.

Products are valid for one natural year of receipt.Avoid repeated freeze / thaw cycles.

Tissue specificity:

Ubiquitous. Highest expression in liver, pancreas, skeletal muscle, spleen, thymus, colon, blood leukocyte and heart. Lowest expression in brain, placenta and lung..

Subcellular location:

Cytoplasm, cytosol.

Function:

Introduction: **WB:** Western Blot **IP:** Immunoprecipitation **IHC:** Immunohistochemistry **ChIP:** Chromatin Immunoprecipitation **ICC/IF:** Immunocytochemistry/Immunofluorescence **F:** Flow Cytometry

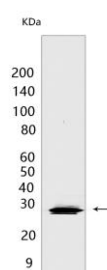
Cross Reactivity: **H:** human **M:** mouse **R:** rat **Hm:** hamster **Mk:** monkey **Vir:** virus **Ml:** mink **C:** chicken **Dm** D. melanogaster **X:** Xenopus **Z:** zebrafish **B:** bovine **Dg:** dog **Pg:** pig **Hr:** horse

For Research Use Only. Not For Use In Diagnostic Procedures.

Exhibits glutathione-dependent thiol transferase and dehydroascorbate reductase activities. Has S-(phenacyl)glutathione reductase activity. Has also glutathione S-transferase activity. Participates in the biotransformation of inorganic arsenic and reduces monomethylarsonic acid (MMA) and dimethylarsonic acid..

Validation Data:

GSTO1 Rabbit mAb[PZ01] Images



Western blot (SDS PAGE) analysis of extracts from HeLa cells. Using GSTO1 Rabbit mAb IgG [PZ01] at dilution of 1:1000 incubated at 4°C over night.

View more information on <http://naturebios.com>

IMPORTANT: For western blots, incubate membrane with diluted primary antibody in 1% w/v Milk, 1X TBST at 4°C overnight.