

Bax Rabbit mAb[AWHI]

Cat NO. :A29487

Information:

Applications	Reactivity:	UniProt ID:	MW(kDa)	Host	Isotype	Size
WB,IHC	H,M,R	Q07812	21	Rabbit	IgG	100ul,200ul

Applications detail:

Application	Dilution
WB	1:1000-2000
IHC	1:100
The optimal dilutions should be determined by the end user	

Conjugate:

UnConjugate

Form:

Liquid

sensitivity:

Endogenous

Purification:

Protein A purification

Specificity:

Antibody is produced by immunizing animals with a synthetic peptide at the sequence of human Bax.

Storage buffer and conditions:

Antibody store in 10 mM PBS, 0.5mg/ml BSA, 50% glycerol (buffer) .

Shipped at 4°C. Store at -20°C or -80°C.

Products are valid for one natural year of receipt.Avoid repeated freeze / thaw cycles.

Tissue specificity:

Expressed in a wide variety of tissues. Isoform Psi is found in glial tumors. Isoform Alpha is expressed in spleen, breast, ovary, testis, colon and brain, and at low levels in skin and lung. Isoform

Subcellular location:

[Isoform Alpha]: Mitochondrion outer membrane,Single-pass membrane protein. Cytoplasm.

Function:

Introduction: **WB:** Western Blot **IP:** Immunoprecipitation **IHC:** Immunohistochemistry **ChIP:** Chromatin Immunoprecipitation **ICC/IF:** Immunocytochemistry/Immunofluorescence **F:** Flow Cytometry

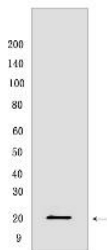
Cross Reactivity: **H:** human **M:** mouse **R:** rat **Hm:** hamster **Mk:** monkey **Vir:** virus **Ml:** mink **C:** chicken **Dm** D. melanogaster **X:** Xenopus **Z:** zebrafish **B:** bovine **Dg:** dog **Pg:** pig **Hr:** horse

For Research Use Only. Not For Use In Diagnostic Procedures.

Plays a role in the mitochondrial apoptotic process (PubMed:10772918, PubMed:16113678, PubMed:18948948, PubMed:21199865, PubMed:21458670, PubMed:25609812, PubMed:8358790, PubMed:8521816, PubMed:11060313, PubMed:16199525). Under normal conditions, BAX is largely cytosolic via constant retrotranslocation from mitochondria to the cytosol mediated by BCL2L1/Bcl-xL, which avoids accumulation of toxic BAX levels at the mitochondrial outer membrane (MOM) (PubMed:21458670). Under stress conditions, undergoes a conformation change that causes translocation to the mitochondrion membrane, leading to the release of cytochrome c that then triggers apoptosis (PubMed:11060313, PubMed:16199525, PubMed:10772918, PubMed:16113678, PubMed:18948948, PubMed:21199865, PubMed:21458670, PubMed:25609812, PubMed:8358790, PubMed:8521816). Promotes activation of CASP3, and thereby apoptosis (PubMed:11060313, PubMed:16199525, PubMed:10772918, PubMed:16113678, PubMed:18948948, PubMed:21199865, PubMed:21458670, PubMed:25609812, PubMed:8358790, PubMed:8521816)..

Validation Data:

Bax Rabbit mAb[AWHI] Images



Western blot (SDS PAGE) analysis of extracts from Wild-type HeLa cells lysates. Using Bax Rabbit mAb IgG [AWHI] at dilution of 1:1000 incubated at 4°C over night.

View more information on <http://naturebios.com>

IMPORTANT: For western blots, incubate membrane with diluted primary antibody in 1% w/v Milk, 1X TBST at 4°C overnight.