

Septin 8 Rabbit mAb [8AZ9]

Cat NO. :A31604

Information:

Applications	Reactivity:	UniProt ID:	MW(kDa)	Host	Isotype	Size
WB,IHC,ICC/IF	H,M,R	Q92599	56 kDa	Rabbit	IgG	100ul,200ul

Applications detail:

Application	Dilution
WB	1:1000-2000
IHC	1:100
ICC/IF	1:100
The optimal dilutions should be determined by the end user	

Conjugate:

UnConjugate

Form:

Liquid

sensitivity:

Endogenous

Purification:

Protein A purification

Specificity:

Antibody is produced by immunizing animals with a synthetic peptide at the sequence of human Septin 8

Storage buffer and conditions:

Antibody store in 10 mM PBS, 0.5mg/ml BSA, 50% glycerol (buffer) .

Shipped at 4°C. Store at -20°C or -80°C.

Products are valid for one natural year of receipt.Avoid repeated freeze / thaw cycles.

Tissue specificity:

Widely expressed, including in brain, heart and platelets,most abundant in aorta. Isoform 2 is expressed at low levels in specific brain areas, such as occipital pole, frontal lobe, temporal lobe and

Subcellular location:

Cytoplasm. Cytoplasm, cytoskeleton. Cell junction, synapse. Cell projection, axon. Cytoplasmic vesicle, secretory vesicle, synaptic vesicle membrane. Cell junction, synapse, presynapse.

Function:

Introduction: **WB:** Western Blot **IP:** Immunoprecipitation **IHC:** Immunohistochemistry **ChIP:** Chromatin Immunoprecipitation **ICC/IF:** Immunocytochemistry/Immunofluorescence **F:** Flow Cytometry

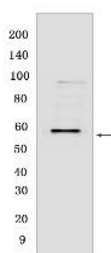
Cross Reactivity: **H:** human **M:** mouse **R:** rat **Hm:** hamster **Mk:** monkey **Vir:** virus **Ml:** mink **C:** chicken **Dm** D. melanogaster **X:** Xenopus **Z:** zebrafish **B:** bovine **Dg:** dog **Pg:** pig **Hr:** horse

For Research Use Only. Not For Use In Diagnostic Procedures.

Filament-forming cytoskeletal GTPase (By similarity). May play a role in platelet secretion (PubMed:15116257). Seems to participate in the process of SNARE complex formation in synaptic vesicles (By similarity)... [Isoform 4]: Stabilizes BACE1 protein levels and promotes the sorting and accumulation of BACE1 to the recycling or endosomal compartments, modulating the beta-amyloidogenic processing of APP..

Validation Data:

Septin 8 Rabbit mAb [8AZ9] Images



Western blot (SDS PAGE) analysis of extracts from HCT-116. Using Septin 8 Rabbit mAb [8AZ9] at dilution of 1:1000 incubated at 4°C over night.

View more information on <http://naturebios.com>

IMPORTANT: For western blots, incubate membrane with diluted primary antibody in 1% w/v Milk, 1X TBST at 4°C overnight.