

BMP6 Rabbit mAb [33LL]

Cat NO. :A33741

Information:

| Applications | Reactivity: | UniProt ID: | MW(kDa) | Host | Isotype | Size |
|--------------|-------------|-------------|---------|--------|---------|-------------|
| WB,IHC | H,M | P22004 | 57 kDa | Rabbit | IgG | 100ul,200ul |

Applications detail:

| Application | Dilution |
|--|-------------|
| WB | 1:1000-2000 |
| IHC | 1:100 |
| The optimal dilutions should be determined by the end user | |

Conjugate:

UnConjugate

Form:

Liquid

sensitivity:

Endogenous

Purification:

Protein A purification

Specificity:

Antibody is produced by immunizing animals with a synthetic peptide at the sequence of human BMP6

Storage buffer and conditions:

Antibody store in 10 mM PBS, 0.5mg/ml BSA, 50% glycerol (buffer) .

Shipped at 4°C. Store at -20°C or -80°C.

Products are valid for one natural year of receipt.Avoid repeated freeze / thaw cycles.

Tissue specificity:

Subcellular location:

Secreted.

Function:

Growth factor of the TGF-beta superfamily that plays essential roles in many developmental processes including cartilage and bone formation (PubMed:31019025). Plays also an important role in the regulation of iron metabolism by acting as a ligand for hemojuvelin/HJV (By similarity). Initiates the canonical BMP signaling cascade by associating with type I receptor ACVR1 and type II receptor ACVR2B (PubMed:18070108). In turn, ACVR1 propagates signal by phosphorylating SMAD1/5/8 that travel to the nucleus and act as activators and repressors of transcription of target. Can also signal through non-canonical pathway such as TAZ-Hippo signaling cascade to modulate VEGF signaling by regulating VEGFR2 expression (PubMed:33021694)..

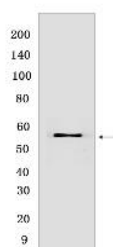
Introduction: **WB:** Western Blot **IP:** Immunoprecipitation **IHC:** Immunohistochemistry **ChIP:** Chromatin Immunoprecipitation **ICC/IF:** Immunocytochemistry/Immunofluorescence **F:** Flow Cytometry

Cross Reactivity: **H:** human **M:** mouse **R:** rat **Hm:** hamster **Mk:** monkey **Vir:** virus **Ml:** mink **C:** chicken **Dm** D. melanogaster **X:** Xenopus **Z:** zebrafish **B:** bovine **Dg:** dog **Pg:** pig **Hr:** horse

For Research Use Only. Not For Use In Diagnostic Procedures.

Validation Data:

BMP6 Rabbit mAb [33LL] Images



Western blot (SDS PAGE) analysis of extracts from Saos-2 cells. Using BMP6 Rabbit mAb [33LL] at dilution of 1:1000 incubated at 4°C over night.

View more information on <http://naturebios.com>

IMPORTANT: For western blots, incubate membrane with diluted primary antibody in 1% w/v Milk, 1X TBST at 4°C overnight.