

**P-Beclin-1 (S30) Rabbit mAb [R2LH]**

**Cat NO. :A33883**

**Information:**

| Applications | Reactivity: | UniProt ID: | MW(kDa) | Host   | Isotype | Size        |
|--------------|-------------|-------------|---------|--------|---------|-------------|
| WB           | H,M,R       | Q14457      | 60 kDa  | Rabbit | IgG     | 100ul,200ul |

**Applications detail:**

| Application  | Dilution    |
|--|-------------|
| WB   | 1:1000-2000 |
| The optimal dilutions should be determined by the end user |             |

**Conjugate:**

UnConjugate

**Form:**

Liquid

**sensitivity:**

Endogenous

**Purification:**

Protein A purification

**Specificity:**

Antibody is produced by immunizing animals with a synthetic peptide at the sequence of Human Phospho-Beclin-1 (Ser30)

**Storage buffer and conditions:**

Antibody store in 10 mM PBS, 0.5mg/ml BSA, 50% glycerol (buffer) .

Shipped at 4°C. Store at-20°C or -80°C.

Products are valid for one natural year of receipt.Avoid repeated freeze / thaw cycles.

**Tissue specificity:**

Ubiquitous.

**Subcellular location:**

Cytoplasm. Golgi apparatus, trans-Golgi network membrane,Peripheral membrane protein. Endosome membrane,Peripheral membrane protein. Endoplasmic reticulum membrane,Peripheral membrane protein.

**Function:**

**Introduction:** **WB:** Western Blot **IP:** Immunoprecipitation **IHC:** Immunohistochemistry **ChIP:** Chromatin Immunoprecipitation **ICC/IF:** Immunocytochemistry/Immunofluorescence **F:** Flow Cytometry

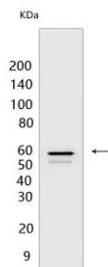
**Cross Reactivity:** **H:** human **M:** mouse **R:** rat **Hm:** hamster **Mk:** monkey **Vir:** virus **Ml:** mink **C:** chicken **Dm** D. melanogaster **X:** Xenopus **Z:** zebrafish **B:** bovine **Dg:** dog **Pg:** pig **Hr:** horse

**For Research Use Only. Not For Use In Diagnostic Procedures.**

Plays a central role in autophagy (PubMed:18570871, PubMed:21358617, PubMed:23184933, PubMed:23974797, PubMed:28445460). Acts as core subunit of the PI3K complex that mediates formation of phosphatidylinositol 3-phosphate, different complex forms are believed to play a role in multiple membrane trafficking pathways: PI3KC3-C1 is involved in initiation of autophagosomes and PI3KC3-C2 in maturation of autophagosomes and endocytosis. Involved in regulation of degradative endocytic trafficking and required for the abscission step in cytokinesis, probably in the context of PI3KC3-C2 (PubMed:20643123, PubMed:20208530, PubMed:23974797, PubMed:26783301). Essential for the formation of PI3KC3-C2 but not PI3KC3-C1 PI3K complex forms. Involved in endocytosis (PubMed:25275521). Protects against infection by a neurovirulent strain of Sindbis virus (PubMed:9765397). May play a role in antiviral host defense.., Beclin-1-C 35 kDa localized to mitochondria can promote apoptosis, it induces the mitochondrial translocation of BAX and the release of proapoptotic factors..

## Validation Data:

### P-Beclin-1 (S30) Rabbit mAb [R2LH] Images



Western blot (SDS PAGE) analysis of extracts from 293T cells treated with CCCP (100  $\mu$  M 2 hr) and hBeclin-1. Using P-Beclin-1 (S30) Rabbit mAb [R2LH] at dilution of

View more information on <http://naturebios.com>

**IMPORTANT:** For western blots, incubate membrane with diluted primary antibody in 1% w/v Milk, 1X TBST at 4°C overnight.