

**CHST4 Mouse mAb[D5AT]**

**Cat NO. :A34318**

**Information:**

Applications	Reactivity:	UniProt ID:	MW(kDa)	Host	Isotype	Size
WB,IHC,ICC/IF	H	Q8NCG5	48kDa	Mouse	IgG	100ul,200ul

**Applications detail:**

Application	Dilution
WB	1:1000-2000
IHC	1:100
ICC/IF	1:100
The optimal dilutions should be determined by the end user	

**Conjugate:**

UnConjugate

**Form:**

Liquid

**sensitivity:**

Endogenous

**Purification:**

Protein A purification

**Specificity:**

Antibody is produced by immunizing animals with a synthetic peptide of human CHST4.

**Storage buffer and conditions:**

Antibody store in 10 mM PBS, 0.5mg/ml BSA, 50% glycerol (buffer) .

Shipped at 4°C. Store at-20°C or -80°C.

Products are valid for one natural year of receipt.Avoid repeated freeze / thaw cycles.

**Tissue specificity:**

Specifically expressed in HEV. Weakly expressed in spleen. Not expressed in other tissues. Expressed in colonic mucinous adenocarcinoma..

**Subcellular location:**

Golgi apparatus membrane,Single-pass type II membrane protein.

**Function:**

**Introduction:** **WB:** Western Blot **IP:** Immunoprecipitation **IHC:** Immunohistochemistry **ChIP:** Chromatin Immunoprecipitation **ICC/IF:** Immunocytochemistry/Immunofluorescence **F:** Flow Cytometry

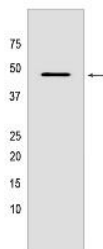
**Cross Reactivity:** **H:** human **M:** mouse **R:** rat **Hm:** hamster **Mk:** monkey **Vir:** virus **Ml:** mink **C:** chicken **Dm** D. melanogaster **X:** Xenopus **Z:** zebrafish **B:** bovine **Dg:** dog **Pg:** pig **Hr:** horse

**For Research Use Only. Not For Use In Diagnostic Procedures.**

Sulfotransferase involved in SELL/L-selectin ligand biosynthesis pathway. Catalyzes the transfer of the sulfate group from 3'-phospho-5'-adenylyl sulfate (PAPS) onto the hydroxyl group at C-6 position of the non-reducing N-acetylglucosamine (GlcNAc) residue within O-linked mucin-type glycans. Contributes to generate sialyl 6-sulfo Lewis X determinant (also known as MECA-79 epitope) for SELL recognition, a prerequisite for continuous lymphocyte homing into peripheral lymph nodes and antigen immune surveillance (PubMed:11439191, PubMed:12107080, PubMed:10330415, PubMed:11726653). Transfers the sulfate group primarily on core 2 GlcNAc $\beta$ 1-6(Gal $\beta$ 1-3)GalNAc $\alpha$ Ser/Thr and extended core 1 GlcNAc $\beta$ 1-3Gal $\beta$ 1-3GalNAc $\alpha$ Ser/Thr based O-linked glycans on CD34 and GLYCAM1 peripheral node addressins (PNAds) expressed on the luminal side of high endothelial venules (HEVs) (PubMed:11439191). The recognition of PNAds by SELL initiates a multistep process comprising tethering and rolling of blood lymphocytes on HEVs against the blood flow, followed by chemokine signaling, integrin-mediated lymphocyte adhesion onto endothelial cells and lymphocyte transendothelial migration. Modulates rolling velocity and differential T and B lymphocyte recruitment into peripheral lymph nodes, with a major role in B lymphocyte homing. Might be redundant in sulfation of MADCAM1 and lymphocyte trafficking to mesenteric lymph nodes (By similarity). Can also sulfonate core 3 GlcNAc $\beta$ 1-3GalNAc-R based glycans as well as GlcNAc $\beta$ 1-3Gal $\beta$ 1-Glc, GlcNAc $\beta$ 1-6ManOMe and GlcNAc $\beta$ 1-2Man oligosaccharides, which might be ectopically expressed during tumorigenesis (PubMed:12107080, PubMed:11439191, PubMed:11726653)..

## Validation Data:

### CHST4 Mouse mAb[D5AT] Images



Western blot (SDS PAGE) analysis of extracts from HT-29 cells. Using CHST4 Mouse mAb IgG [D5AT] at dilution of 1:1000 incubated at 4°C over night.

View more information on <http://naturebios.com>

**IMPORTANT:** For western blots, incubate membrane with diluted primary antibody in 1% w/v Milk, 1X TBST at 4°C overnight.