

Apolipoprotein CIII Rabbit mAb [2XUV]

Cat NO. :A34388

Information:

| Applications | Reactivity: | UniProt ID: | MW(kDa) | Host | Isotype | Size |
|--------------|-------------|-------------|---------|--------|---------|-------------|
| WB,IHC | H | P02656 | 11 kDa | Rabbit | IgG | 100ul,200ul |

Applications detail:

| Application | Dilution |
|--|-------------|
| WB | 1:1000-2000 |
| IHC | 1:100, |
| The optimal dilutions should be determined by the end user | |

Conjugate:

UnConjugate

Form:

Liquid

sensitivity:

Endogenous

Purification:

Protein A purification

Specificity:

Antibody is produced by immunizing animals with a synthetic peptide of Human Apolipoprotein CIII.

Storage buffer and conditions:

Antibody store in 10 mM PBS, 0.5mg/ml BSA, 50% glycerol (buffer) .

Shipped at 4°C. Store at -20°C or -80°C.

Products are valid for one natural year of receipt.Avoid repeated freeze / thaw cycles.

Tissue specificity:

Liver..

Subcellular location:

Secreted.

Function:

Component of triglyceride-rich very low density lipoproteins (VLDL) and high density lipoproteins (HDL) in plasma (PubMed:18201179, PubMed:22510806). Plays a multifaceted role in triglyceride homeostasis (PubMed:18201179, PubMed:22510806). Intracellularly, promotes hepatic very low density lipoprotein 1 (VLDL1) assembly and secretion,extracellularly, attenuates hydrolysis and clearance of triglyceride-rich lipoproteins (TRLs) (PubMed:18201179, PubMed:22510806). Impairs the lipolysis of TRLs by inhibiting lipoprotein lipase and the hepatic uptake of TRLs by remnant receptors (PubMed:18201179, PubMed:22510806). Formed of several

Introduction: **WB:** Western Blot **IP:** Immunoprecipitation **IHC:** Immunohistochemistry **ChIP:** Chromatin Immunoprecipitation **ICC/IF:** Immunocytochemistry/Immunofluorescence **F:** Flow Cytometry

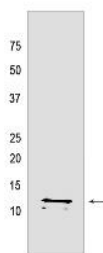
Cross Reactivity: **H:** human **M:** mouse **R:** rat **Hm:** hamster **Mk:** monkey **Vir:** virus **Ml:** mink **C:** chicken **Dm** D. melanogaster **X:** Xenopus **Z:** zebrafish **B:** bovine **Dg:** dog **Pg:** pig **Hr:** horse

For Research Use Only. Not For Use In Diagnostic Procedures.

curved helices connected via semiflexible hinges, so that it can wrap tightly around the curved micelle surface and easily adapt to the different diameters of its natural binding partners (PubMed:18408013)..

Validation Data:

Apolipoprotein CIII Rabbit mAb [2XUV] Images



Western blot (SDS PAGE) analysis of extracts from Human plasma tissue lyaste.using Apolipoprotein CIII Rabbit mAb [2XUV] at dilution of 1:1000 incubated at

View more information on <http://naturebios.com>

IMPORTANT: For western blots, incubate membrane with diluted primary antibody in 1% w/v Milk, 1X TBST at 4°C overnight.

For Research Use Only. Not For Use In Diagnostic Procedures.