

**Galectin 8/Gal-8 Rabbit mAb [1J8W]**

**Cat NO. :A37079**

**Information:**

Applications	Reactivity:	UniProt ID:	MW(kDa)	Host	Isotype	Size
WB,IHC,ICC/IF	H	O00214	36/40 kDa	Rabbit	IgG	100ul,200ul

**Applications detail:**

Application	Dilution
WB	1:1000-2000
IHC	1:100
ICC/IF	1:100
The optimal dilutions should be determined by the end user	

**Conjugate:**

UnConjugate

**Form:**

Liquid

**sensitivity:**

Endogenous

**Purification:**

Protein A purification

**Specificity:**

Antibody is produced by immunizing animals with a synthetic peptide at the sequence of human Galectin 8/Gal-8

**Storage buffer and conditions:**

Antibody store in 10 mM PBS, 0.5mg/ml BSA, 50% glycerol (buffer) .

Shipped at 4°C. Store at -20°C or -80°C.

Products are valid for one natural year of receipt.Avoid repeated freeze / thaw cycles.

**Tissue specificity:**

Ubiquitous. Selective expression by prostate carcinomas versus normal prostate and benign prostatic hypertrophy.

**Subcellular location:**

Cytoplasmic vesicle. Cytoplasm, cytosol.

**Function:**

**Introduction:** **WB:** Western Blot **IP:** Immunoprecipitation **IHC:** Immunohistochemistry **ChIP:** Chromatin Immunoprecipitation **ICC/IF:** Immunocytochemistry/Immunofluorescence **F:** Flow Cytometry

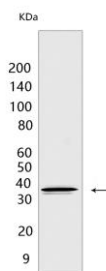
**Cross Reactivity:** **H:** human **M:** mouse **R:** rat **Hm:** hamster **Mk:** monkey **Vir:** virus **Ml:** mink **C:** chicken **Dm** D. melanogaster **X:** Xenopus **Z:** zebrafish **B:** bovine **Dg:** dog **Pg:** pig **Hr:** horse

**For Research Use Only. Not For Use In Diagnostic Procedures.**

Beta-galactoside-binding lectin that acts as a sensor of membrane damage caused by infection and restricts the proliferation of infecting pathogens by targeting them for autophagy (PubMed:22246324, PubMed:28077878). Detects membrane rupture by binding beta-galactoside ligands located on the luminal side of the endosome membrane, these ligands becoming exposed to the cytoplasm following rupture (PubMed:22246324, PubMed:28077878). Restricts infection by initiating autophagy via interaction with CALCOCO2/NDP52 (PubMed:22246324, PubMed:28077878). Required to restrict infection of bacterial invasion such as *S.typhimurium* (PubMed:22246324). Also required to restrict infection of Picornaviridae viruses (PubMed:28077878). Has a marked preference for 3'-O-sialylated and 3'-O-sulfated glycans (PubMed:21288902)..

## Validation Data:

### Galectin 8/Gal-8 Rabbit mAb [1J8W] Images



Western blot ( SDS PAGE ) analysis of extracts from HepG2 cells .Using Galectin 8/Gal-8Rabbit mAb [1J8W] at dilution of 1:1000 incubated at 4 °C over night.

View more information on <http://naturebios.com>

**IMPORTANT:** For western blots, incubate membrane with diluted primary antibody in 1% w/v Milk, 1X TBST at 4°C overnight.