

**Phospholipid Scramblase 1 (PLSCR1) Rabbit mAb[M1ZY]**

**Cat NO. :A37629**

**Information:**

Applications	Reactivity:	UniProt ID:	MW(kDa)	Host	Isotype	Size
WB,IHC,ICC/IF	H,M,R	O15162	35kDa	Rabbit	IgG	50ul 100ul,200ul

**Applications detail:**

Application	Dilution
WB	1:1000-2000
IHC	1:100
ICC/IF	1:100
The optimal dilutions should be determined by the end user	

**Conjugate:**

UnConjugate

**Form:**

Liquid

**sensitivity:**

Endogenous

**Purification:**

Protein A purification

**Specificity:**

Antibody is produced by immunizing animals with a synthetic peptide of human Phospholipid Scramblase 1 (PLSCR1).

**Storage buffer and conditions:**

Antibody store in 10 mM PBS, 0.5mg/ml BSA, 50% glycerol (buffer) .

Shipped at 4°C. Store at-20°C or -80°C.

Products are valid for one natural year of receipt.Avoid repeated freeze / thaw cycles.

**Tissue specificity:**

Expressed in platelets, erythrocyte membranes, lymphocytes, spleen, thymus, prostate, testis, uterus, intestine, colon, heart, placenta, lung, liver, kidney and pancreas. Not detected in brain and

**Subcellular location:**

Cell membrane,Single-pass type II membrane protein. Cell membrane,Lipid-anchor,Cytoplasmic side. Nucleus. Cytoplasm. Cytoplasm, perinuclear region.

**Function:**

**Introduction:** **WB:** Western Blot **IP:** Immunoprecipitation **IHC:** Immunohistochemistry **ChIP:** Chromatin Immunoprecipitation **ICC/IF:** Immunocytochemistry/Immunofluorescence **F:** Flow Cytometry

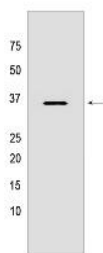
**Cross Reactivity:** **H:** human **M:** mouse **R:** rat **Hm:** hamster **Mk:** monkey **Vir:** virus **Ml:** mink **C:** chicken **Dm** D. melanogaster **X:** Xenopus **Z:** zebrafish **B:** bovine **Dg:** dog **Pg:** pig **Hr:** horse

**For Research Use Only. Not For Use In Diagnostic Procedures.**

Catalyzes calcium-induced ATP-independent rapid bidirectional and non-specific movement of phospholipids (lipid scrambling or lipid flip-flop) between the inner and outer leaflet of the plasma membrane resulting in collapse of the phospholipid asymmetry which leads to phosphatidylserine externalization on the cell surface (PubMed:9218461, PubMed:8663431, PubMed:10770950, PubMed:9572851, PubMed:9485382, PubMed:18629440, PubMed:23590222, PubMed:24648509, PubMed:24343571, PubMed:32110987, PubMed:23659204, PubMed:29748552). Mediates calcium-dependent phosphatidylserine externalization and apoptosis in neurons via its association with TRPC5 (By similarity). Also exhibits magnesium-dependent nuclease activity against double-stranded DNA and RNA but not single-stranded DNA and can enhance DNA decatenation mediated by TOP2A (PubMed:27206388, PubMed:17567603). Negatively regulates FcR-mediated phagocytosis in differentiated macrophages (PubMed:26745724). May contribute to cytokine-regulated cell proliferation and differentiation (By similarity). May play a role in the antiviral response of interferon (IFN) by amplifying and enhancing the IFN response through increased expression of select subset of potent antiviral genes (PubMed:15308695). Acts as an attachment receptor for HCV (PubMed:21806988)..

### Validation Data:

#### Phospholipid Scramblase 1 (PLSCR1) Rabbit mAb[M1ZY] Images



Western blot (SDS PAGE) analysis of extracts from HT-29 cells. Using Phospholipid Scramblase 1 (PLSCR1) Rabbit mAb IgG [M1ZY] at dilution of 1:1000 incubated at

View more information on <http://naturebios.com>

**IMPORTANT:** For western blots, incubate membrane with diluted primary antibody in 1% w/v Milk, 1X TBST at 4°C overnight.