

**GBP1 Mouse mAb[W60C]**

**Cat NO. :A40223**

**Information:**

Applications	Reactivity:	UniProt ID:	MW(kDa)	Host	Isotype	Size
WB	H,R	P32455	68kDa	Mouse	IgG	50ul 100ul,200ul

**Applications detail:**

Application	Dilution
WB	1:1000-2000
The optimal dilutions should be determined by the end user	

**Conjugate:**

UnConjugate

**Form:**

Liquid

**sensitivity:**

Endogenous

**Purification:**

Protein A purification

**Specificity:**

Antibody is produced by immunizing animals with a synthetic peptide of human GBP1.

**Storage buffer and conditions:**

Antibody store in 10 mM PBS, 0.5mg/ml BSA, 50% glycerol (buffer) .

Shipped at 4°C. Store at-20°C or -80°C.

Products are valid for one natural year of receipt.Avoid repeated freeze / thaw cycles.

**Tissue specificity:**

**Subcellular location:**

Cytoplasm. Golgi apparatus membrane,Lipid-anchor,Cytoplasmic side. Cell membrane. Secreted. Cytoplasmic vesicle.

**Function:**

**Introduction:** **WB:** Western Blot **IP:** Immunoprecipitation **IHC:** Immunohistochemistry **ChIP:** Chromatin Immunoprecipitation **ICC/IF:** Immunocytochemistry/Immunofluorescence **F:** Flow Cytometry

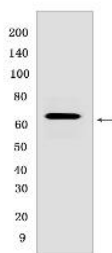
**Cross Reactivity:** **H:** human **M:** mouse **R:** rat **Hm:** hamster **Mk:** monkey **Vir:** virus **Ml:** mink **C:** chicken **Dm** D. melanogaster **X:** Xenopus **Z:** zebrafish **B:** bovine **Dg:** dog **Pg:** pig **Hr:** horse

**For Research Use Only. Not For Use In Diagnostic Procedures.**

Hydrolyzes GTP to GMP in 2 consecutive cleavage reactions (By similarity). Confers protection to several pathogens, including the bacterial pathogens *Listeria monocytogenes* and *Mycobacterium bovis* BCG as well as the protozoan pathogen *Toxoplasma gondii* (By similarity). Promotes IFN-gamma-mediated host defense against bacterial infections by regulating bacteriolytic peptide generation via its interaction with ubiquitin-binding protein SQSTM1, which delivers monoubiquitylated proteins to autolysosomes for the generation of bacteriolytic peptides (By similarity). Exhibits antiviral activity against influenza virus (PubMed:22106366)..

## Validation Data:

### GBP1 Mouse mAb[W60C] Images



Western blot (SDS PAGE) analysis of extracts from HeLa cells. Using GBP1 Mouse mAb IgG [W60C] at dilution of 1:1000 incubated at 4°C over night.

View more information on <http://naturebios.com>

**IMPORTANT:** For western blots, incubate membrane with diluted primary antibody in 1% w/v Milk, 1X TBST at 4°C overnight.