

**Carbonic Anhydrase 9 (CA9/G250) Rabbit mAb[S2DL]**

**Cat NO. :A41103**

**Information:**

| Applications | Reactivity: | UniProt ID: | MW(kDa)     | Host   | Isotype | Size             |
|--------------|-------------|-------------|-------------|--------|---------|------------------|
| WB,IHC       | H           | Q16790      | 46,50,58kDa | Rabbit | IgG     | 50ul 100ul,200ul |

**Applications detail:**

| Application  | Dilution    |
|--|-------------|
| WB   | 1:1000-2000 |
| IHC  | 1:100       |
| The optimal dilutions should be determined by the end user |             |

**Conjugate:**

UnConjugate

**Form:**

Liquid

**sensitivity:**

Endogenous

**Purification:**

Protein A purification

**Specificity:**

Antibody is produced by immunizing animals with a synthetic peptide of human Carbonic Anhydrase 9 (CA9/G250).

**Storage buffer and conditions:**

Antibody store in 10 mM PBS, 0.5mg/ml BSA, 50% glycerol (buffer) .

Shipped at 4°C. Store at-20°C or -80°C.

Products are valid for one natural year of receipt.Avoid repeated freeze / thaw cycles.

**Tissue specificity:**

Expressed primarily in carcinoma cells lines. Expression is restricted to very few normal tissues and the most abundant expression is found in the epithelial cells of gastric mucosa.

**Subcellular location:**

Nucleus. Nucleus, nucleolus. Cell membrane,Single-pass type I membrane protein. Cell projection, microvillus membrane,Single-pass type I membrane protein.

**Function:**

**Introduction:** **WB:** Western Blot **IP:** Immunoprecipitation **IHC:** Immunohistochemistry **ChIP:** Chromatin Immunoprecipitation **ICC/IF:** Immunocytochemistry/Immunofluorescence **F:** Flow Cytometry

**Cross Reactivity:** **H:** human **M:** mouse **R:** rat **Hm:** hamster **Mk:** monkey **Vir:** virus **Ml:** mink **C:** chicken **Dm** D. melanogaster **X:** Xenopus **Z:** zebrafish **B:** bovine **Dg:** dog **Pg:** pig **Hr:** horse

**For Research Use Only. Not For Use In Diagnostic Procedures.**

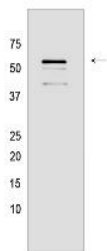
---

Catalyzes the interconversion between carbon dioxide and water and the dissociated ions of carbonic acid (i.e. bicarbonate and hydrogen ions)..

## Validation Data:

### Carbonic Anhydrase 9 (CA9/G250) Rabbit mAb[S2DL] Images

---



Western blot (SDS PAGE) analysis of extracts from HT-29 cells. Using Carbonic Anhydrase 9 (CA9/G250) Rabbit mAb IgG [S2DL] at dilution of 1:1000 incubated at 4°C

View more information on <http://naturebios.com>

**IMPORTANT:** For western blots, incubate membrane with diluted primary antibody in 1% w/v Milk, 1X TBST at 4°C overnight.