

Plexin B2/MM1 Rabbit mAb [K5G7]

Cat NO. :A44180

Information:

Applications	Reactivity:	UniProt ID:	MW(kDa)	Host	Isotype	Size
WB	H,M,R	O15031	80 kDa	Rabbit	IgG	100ul,200ul

Applications detail:

Application	Dilution
WB	1:1000-2000
The optimal dilutions should be determined by the end user	

Conjugate:

UnConjugate

Form:

Liquid

sensitivity:

Endogenous

Purification:

Protein A purification

Specificity:

Antibody is produced by immunizing animals with a synthetic peptide at the sequence of human Plexin B2/MM1

Storage buffer and conditions:

Antibody store in 10 mM PBS, 0.5mg/ml BSA, 50% glycerol (buffer) .

Shipped at 4°C. Store at -20°C or -80°C.

Products are valid for one natural year of receipt.Avoid repeated freeze / thaw cycles.

Tissue specificity:

Subcellular location:

Cell membrane,Single-pass type I membrane protein.

Function:

Cell surface receptor for SEMA4C, SEMA4D and SEMA4G that plays an important role in cell-cell signaling (By similarity). Plays a role in glutamatergic synapse development and is required for SEMA4A-mediated excitatory synapse development (By similarity). Binding to class 4 semaphorins promotes downstream activation of RHOA and phosphorylation of ERBB2 at 'Tyr-1248' (By similarity). Required for normal differentiation and migration of neuronal cells during brain corticogenesis and for normal embryonic brain development (By similarity).

Regulates the migration of cerebellar granule cells in the developing brain (By similarity). Plays a role in RHOA activation and subsequent changes of the actin cytoskeleton (PubMed:12183458). Plays a role in axon guidance,

Introduction: **WB:** Western Blot **IP:** Immunoprecipitation **IHC:** Immunohistochemistry **ChIP:** Chromatin Immunoprecipitation **ICC/IF:** Immunocytochemistry/Immunofluorescence **F:** Flow Cytometry

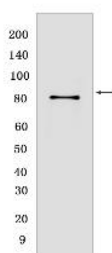
Cross Reactivity: **H:** human **M:** mouse **R:** rat **Hm:** hamster **Mk:** monkey **Vir:** virus **Ml:** mink **C:** chicken **Dm** D. melanogaster **X:** Xenopus **Z:** zebrafish **B:** bovine **Dg:** dog **Pg:** pig **Hr:** horse

For Research Use Only. Not For Use In Diagnostic Procedures.

invasive growth and cell migration (PubMed:15184888). May modulate the activity of RAC1 and CDC42 (By similarity)..

Validation Data:

Plexin B2/MM1 Rabbit mAb [K5G7] Images



Western blot (SDS PAGE) analysis of extracts from HeLa cells. Using Plexin B2/MM1 Rabbit mAb [K5G7] at dilution of 1:1000 incubated at 4°C over night.

View more information on <http://naturebios.com>

IMPORTANT: For western blots, incubate membrane with diluted primary antibody in 1% w/v Milk, 1X TBST at 4°C overnight.