

**NPC1L1 Rabbit mAb [L9QX]**

**Cat NO. :A49536**

**Information:**

Applications	Reactivity:	UniProt ID:	MW(kDa)	Host	Isotype	Size
WB	H	Q9UHC9	149 kDa	Rabbit	IgG	100ul,200ul

**Applications detail:**

Application	Dilution
WB	1:1000-2000
The optimal dilutions should be determined by the end user	

**Conjugate:**

UnConjugate

**Form:**

Liquid

**sensitivity:**

Endogenous

**Purification:**

Protein A purification

**Specificity:**

Antibody is produced by immunizing animals with a synthetic peptide of Human NPC1L1.

**Storage buffer and conditions:**

Antibody store in 10 mM PBS, 0.5mg/ml BSA, 50% glycerol (buffer) .

Shipped at 4°C. Store at -20°C or -80°C.

Products are valid for one natural year of receipt. Avoid repeated freeze / thaw cycles.

**Tissue specificity:**

Widely expressed. Expressed in liver. Also expressed in small intestine, pancreas, kidney, lung, pancreas, spleen, heart, gall bladder, brain, testis, stomach and muscle..

**Subcellular location:**

Apical cell membrane, Multi-pass membrane protein. Cell membrane, Multi-pass membrane protein. Cytoplasmic vesicle membrane, Multi-pass membrane protein.

**Function:**

**Introduction:** **WB:** Western Blot **IP:** Immunoprecipitation **IHC:** Immunohistochemistry **ChIP:** Chromatin Immunoprecipitation **ICC/IF:** Immunocytochemistry/Immunofluorescence **F:** Flow Cytometry

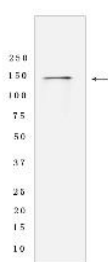
**Cross Reactivity:** **H:** human **M:** mouse **R:** rat **Hm:** hamster **Mk:** monkey **Vir:** virus **Ml:** mink **C:** chicken **Dm** D. melanogaster **X:** Xenopus **Z:** zebrafish **B:** bovine **Dg:** dog **Pg:** pig **Hr:** horse

**For Research Use Only. Not For Use In Diagnostic Procedures.**

Plays a major role in cholesterol homeostasis. Is critical for the uptake of cholesterol across the plasma membrane of the intestinal enterocyte. Is the direct molecular target of ezetimibe, a drug that inhibits cholesterol absorption. Lack of activity leads to multiple lipid transport defects. The protein may have a function in the transport of multiple lipids and their homeostasis, and may play a critical role in regulating lipid metabolism. Acts as a negative regulator of NPC2 and down-regulates its expression and secretion by inhibiting its maturation and accelerating its degradation..

## Validation Data:

### NPC1L1 Rabbit mAb [L9QX] Images



Western blot (SDS PAGE) analysis of extracts from Human fetal liver tissue lyaste.using NPC1L1 Rabbit mAb [L9QX] at dilution of 1:1000 incubated at 4°C over night

View more information on <http://naturebios.com>

**IMPORTANT:** For western blots, incubate membrane with diluted primary antibody in 1% w/v Milk, 1X TBST at 4°C overnight.