

EED Mouse mAb[K4MQ]

Cat NO. :A51169

Information:

Applications	Reactivity:	UniProt ID:	MW(kDa)	Host	Isotype	Size
WB,IHC,ICC/IF	H,M,R	O75530	50/53/46kDa.	Mouse	IgG	100ul,200ul

Applications detail:

Application	Dilution
WB	1:1000-2000
IHC	1:100
ICC/IF	1:100
The optimal dilutions should be determined by the end user	

Conjugate:

UnConjugate

Form:

Liquid

sensitivity:

Endogenous

Purification:

Protein A purification

Specificity:

Antibody is produced by immunizing animals with a synthetic peptide of human EED.

Storage buffer and conditions:

Antibody store in 10 mM PBS, 0.5mg/ml BSA, 50% glycerol (buffer) .

Shipped at 4°C. Store at -20°C or -80°C.

Products are valid for one natural year of receipt.Avoid repeated freeze / thaw cycles.

Tissue specificity:

Expressed in brain, colon, heart, kidney, liver, lung, muscle, ovary, peripheral blood leukocytes, pancreas, placenta, prostate, spleen, small intestine, testis, thymus and uterus. Appears to be

Subcellular location:

Nucleus. Chromosome.

Function:

Introduction: **WB:** Western Blot **IP:** Immunoprecipitation **IHC:** Immunohistochemistry **ChIP:** Chromatin Immunoprecipitation **ICC/IF:** Immunocytochemistry/Immunofluorescence **F:** Flow Cytometry

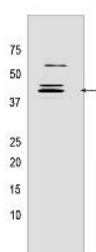
Cross Reactivity: **H:** human **M:** mouse **R:** rat **Hm:** hamster **Mk:** monkey **Vir:** virus **Ml:** mink **C:** chicken **Dm** D. melanogaster **X:** Xenopus **Z:** zebrafish **B:** bovine **Dg:** dog **Pg:** pig **Hr:** horse

For Research Use Only. Not For Use In Diagnostic Procedures.

Polycomb group (PcG) protein. Component of the PRC2/EED-EZH2 complex, which methylates 'Lys-9' and 'Lys-27' of histone H3, leading to transcriptional repression of the affected target gene. Also recognizes 'Lys-26' trimethylated histone H1 with the effect of inhibiting PRC2 complex methyltransferase activity on nucleosomal histone H3 'Lys-27', whereas H3 'Lys-27' recognition has the opposite effect, enabling the propagation of this repressive mark. The PRC2/EED-EZH2 complex may also serve as a recruiting platform for DNA methyltransferases, thereby linking two epigenetic repression systems. Genes repressed by the PRC2/EED-EZH2 complex include HOXC8, HOXA9, MYT1 and CDKN2A..

Validation Data:

EED Mouse mAb[K4MQ] Images



Western blot (SDS PAGE) analysis of extracts from U2OS cells. Using EED Mouse mAb IgG [K4MQ] at dilution of 1:1000 incubated at 4°C over night.

View more information on <http://naturebios.com>

IMPORTANT: For western blots, incubate membrane with diluted primary antibody in 1% w/v Milk, 1X TBST at 4°C overnight.