

WDR82 Rabbit mAb [FHH5]

Cat NO. :A53257

Information:

Applications	Reactivity:	UniProt ID:	MW(kDa)	Host	Isotype	Size
WB	H,M	Q6UXN9	30 kDa	Rabbit	IgG	100ul,200ul

Applications detail:

Application	Dilution
WB	1:1000-2000
The optimal dilutions should be determined by the end user	

Conjugate:

UnConjugate

Form:

Liquid

sensitivity:

Endogenous

Purification:

Protein A purification

Specificity:

Antibody is produced by immunizing animals with a synthetic peptide at the sequence of Human WDR82

Storage buffer and conditions:

Antibody store in 10 mM PBS, 0.5mg/ml BSA, 50% glycerol (buffer) .

Shipped at 4°C. Store at -20°C or -80°C.

Products are valid for one natural year of receipt.Avoid repeated freeze / thaw cycles.

Tissue specificity:

Subcellular location:

Nucleus. Chromosome.

Function:

Regulatory component of the SET1 complex implicated in the tethering of this complex to transcriptional start sites of active genes (PubMed:17998332, PubMed:18838538, PubMed:20516061). Facilitates histone H3 'Lys-4' methylation (H3K4me) via recruitment of the SETD1A or SETD1B to the 'Ser-5' phosphorylated C-terminal domain (CTD) of RNA polymerase II large subunit (POLR2A) (PubMed:17998332, PubMed:18838538). Component of PTW/PP1 phosphatase complex, which plays a role in the control of chromatin structure and cell cycle progression during the transition from mitosis into interphase (PubMed:20516061). Together with ZC3H4, but independently of the SET1 complex, part of a transcription termination checkpoint that promotes transcription

Introduction: **WB:** Western Blot **IP:** Immunoprecipitation **IHC:** Immunohistochemistry **ChIP:** Chromatin Immunoprecipitation **ICC/IF:** Immunocytochemistry/Immunofluorescence **F:** Flow Cytometry

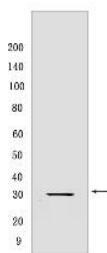
Cross Reactivity: **H:** human **M:** mouse **R:** rat **Hm:** hamster **Mk:** monkey **Vir:** virus **Ml:** mink **C:** chicken **Dm** D. melanogaster **X:** Xenopus **Z:** zebrafish **B:** bovine **Dg:** dog **Pg:** pig **Hr:** horse

For Research Use Only. Not For Use In Diagnostic Procedures.

termination of long non-coding RNAs (lncRNAs) (PubMed:33913806, PubMed:33767452). The transcription termination checkpoint is activated by the inefficiently spliced first exon of lncRNAs and promotes transcription termination of lncRNAs and their subsequent degradation by the exosome (PubMed:33767452)..

Validation Data:

WDR82 Rabbit mAb [FHH5] Images



Western blot (SDS PAGE) analysis of extracts from HCT116 cells. Using WDR82 Rabbit mAb [FHH5] at dilution of 1:1000 incubated at 4°C overnight.

View more information on <http://naturebios.com>

IMPORTANT: For western blots, incubate membrane with diluted primary antibody in 1% w/v Milk, 1X TBST at 4°C overnight.