

WDR4 Rabbit mAb[9515]

Cat NO. :A55194

Information:

Applications	Reactivity:	UniProt ID:	MW(kDa)	Host	Isotype	Size
WB,IHC	H,M,R	P57081	73KDa	Rabbit	IgG	50ul 100ul,200ul

Applications detail:

Application	Dilution
WB	1:1000-2000
IHC	1:100
The optimal dilutions should be determined by the end user	

Conjugate:

UnConjugate

Form:

Liquid

sensitivity:

Endogenous

Purification:

Protein A purification

Specificity:

Antibody is produced by immunizing animals with a synthetic peptide of human WDR4.

Storage buffer and conditions:

Antibody store in 10 mM PBS, 0.5mg/ml BSA, 50% glycerol (buffer) .

Shipped at 4°C. Store at-20°C or -80°C.

Products are valid for one natural year of receipt.Avoid repeated freeze / thaw cycles.

Tissue specificity:

Subcellular location:

Nucleus. Chromosome.

Function:

Non-catalytic component of a methyltransferase complex required for the formation of N(7)-methylguanine in a subset of RNA species, such as tRNAs, mRNAs and microRNAs (miRNAs) (PubMed:12403464, PubMed:31031084, PubMed:31031083). In the methyltransferase complex, it is required to stabilize and induce conformational changes of the catalytic subunit (PubMed:12403464). Required for the formation of N(7)-methylguanine at position 46 (m7G46) in tRNA (PubMed:12403464, PubMed:31031084). Also required for the formation of N(7)-methylguanine at internal sites in a subset of mRNAs (PubMed:31031084). Also required for methylation of a specific subset of miRNAs, such as let-7 (PubMed:31031083). Independently of METTL1, also

Introduction: **WB:** Western Blot **IP:** Immunoprecipitation **IHC:** Immunohistochemistry **ChIP:** Chromatin Immunoprecipitation **ICC/IF:** Immunocytochemistry/Immunofluorescence **F:** Flow Cytometry

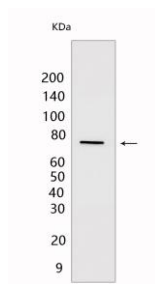
Cross Reactivity: **H:** human **M:** mouse **R:** rat **Hm:** hamster **Mk:** monkey **Vir:** virus **Ml:** mink **C:** chicken **Dm** D. melanogaster **X:** Xenopus **Z:** zebrafish **B:** bovine **Dg:** dog **Pg:** pig **Hr:** horse

For Research Use Only. Not For Use In Diagnostic Procedures.

plays a role in genome stability: localizes at the DNA replication site and regulates endonucleolytic activities of FEN1 (PubMed:26751069)..

Validation Data:

WDR4 Rabbit mAb[9515] Images



Western blot (SDS PAGE) analysis of extracts from HeLa cells. Using WDR4 Rabbit mAb IgG [9515] at dilution of 1:1000 incubated at 4°C over night.

View more information on <http://naturebios.com>

IMPORTANT: For western blots, incubate membrane with diluted primary antibody in 1% w/v Milk, 1X TBST at 4°C overnight.