

Aquaporin 2 Rabbit mAb [VZVN]

Cat NO. :A55550

Information:

Applications	Reactivity:	UniProt ID:	MW(kDa)	Host	Isotype	Size
WB,IHC	H,M,R	P41181	28KD kDa	Rabbit	IgG	100ul,200ul

Applications detail:

Application	Dilution
WB	1:1000-2000
IHC	1:100
The optimal dilutions should be determined by the end user	

Conjugate:

UnConjugate

Form:

Liquid

sensitivity:

Endogenous

Purification:

Protein A purification

Specificity:

Antibody is produced by immunizing animals with a synthetic peptide at the sequence of human Aquaporin 2

Storage buffer and conditions :

Antibody store in 10 mM PBS, 0.5mg/ml BSA, 50% glycerol (buffer) .

Shipped at 4°C. Store at -20°C or -80°C.

Products are valid for one natural year of receipt.Avoid repeated freeze / thaw cycles.

Tissue specificity:

Expressed in collecting tubules in kidney medulla (at protein level) (PubMed:7510718). Detected in kidney (PubMed:7510718)..

Subcellular location:

Apical cell membrane,Multi-pass membrane protein. Basolateral cell membrane,Multi-pass membrane protein.

Cell membrane,Multi-pass membrane protein. Cytoplasmic vesicle membrane,Multi-pass membrane

Function:

Introduction: **WB:** Western Blot **IP:** Immunoprecipitation **IHC:** Immunohistochemistry **ChIP:** Chromatin Immunoprecipitation **ICC/IF:** Immunocytochemistry/Immunofluorescence **F:** Flow Cytometry

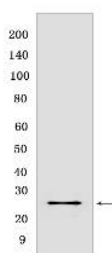
Cross Reactivity: **H:** human **M:** mouse **R:** rat **Hm:** hamster **Mk:** monkey **Vir:** virus **Ml:** mink **C:** chicken **Dm** D. melanogaster **X:** Xenopus **Z:** zebrafish **B:** bovine **Dg:** dog **Pg:** pig **Hr:** horse

For Research Use Only. Not For Use In Diagnostic Procedures.

Forms a water-specific channel that provides the plasma membranes of renal collecting duct with high permeability to water, thereby permitting water to move in the direction of an osmotic gradient (PubMed:8140421, PubMed:7524315, PubMed:7510718, PubMed:15509592). Plays an essential role in renal water homeostasis (PubMed:8140421, PubMed:7524315, PubMed:15509592)..

Validation Data:

Aquaporin 2 Rabbit mAb [VZVN] Images



Western blot (SDS PAGE) analysis of extracts from Human fetal kidney. Using Aquaporin 2 Rabbit mAb [VZVN] at dilution of 1:1000 incubated at 4°C over night.

View more information on <http://naturebios.com>

IMPORTANT: For western blots, incubate membrane with diluted primary antibody in 1% w/v Milk, 1X TBST at 4°C overnight.