

ARL 1 Rabbit mAb [3WTX]

Cat NO. :A56741

Information:

Applications	Reactivity:	UniProt ID:	MW(kDa)	Host	Isotype	Size
WB,IHC,ICC/IF	H	P40616	20 kDa	Rabbit	IgG	100ul,200ul

Applications detail:

Application	Dilution
WB	1:1000-2000
IHC	1:100,
ICC/IF	1:100,
The optimal dilutions should be determined by the end user	

Conjugate:

UnConjugate

Form:

Liquid

sensitivity:

Endogenous

Purification:

Protein A purification

Specificity:

Antibody is produced by immunizing animals with a synthetic peptide of Human ARL 1.

Storage buffer and conditions:

Antibody store in 10 mM PBS, 0.5mg/ml BSA, 50% glycerol (buffer) .

Shipped at 4°C. Store at-20°C or -80°C.

Products are valid for one natural year of receipt.Avoid repeated freeze / thaw cycles.

Tissue specificity:

Detected in heart, liver, lung and liver (at protein level). Detected in fetal heart, lung, liver and kidney. Detected in adult heart, placenta, lung, liver, skeletal muscle, kidney and pancreas..

Subcellular location:

Golgi apparatus membrane,Peripheral membrane protein,Cytoplasmic side. Golgi apparatus, trans-Golgi network membrane. Membrane,Lipid-anchor.

Function:

Introduction: **WB:** Western Blot **IP:** Immunoprecipitation **IHC:** Immunohistochemistry **ChIP:** Chromatin Immunoprecipitation **ICC/IF:** Immunocytochemistry/Immunofluorescence **F:** Flow Cytometry

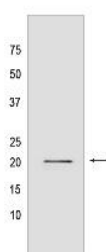
Cross Reactivity: **H:** human **M:** mouse **R:** rat **Hm:** hamster **Mk:** monkey **Vir:** virus **Ml:** mink **C:** chicken **Dm** D. melanogaster **X:** Xenopus **Z:** zebrafish **B:** bovine **Dg:** dog **Pg:** pig **Hr:** horse

For Research Use Only. Not For Use In Diagnostic Procedures.

GTP-binding protein that recruits several effectors, such as golgins, arfaptins and Arf-GEFs to the trans-Golgi network, and modulates their functions at the Golgi complex (PubMed:9624189, PubMed:21239483, PubMed:27436755, PubMed:22679020, PubMed:27373159). Plays thereby a role in a wide range of fundamental cellular processes, including cell polarity, innate immunity, or protein secretion mediated by arfaptins, which were shown to play a role in maintaining insulin secretion from pancreatic beta cells (PubMed:22981988)..

Validation Data:

ARL 1 Rabbit mAb [3WTX] Images



Western blot (SDS PAGE) analysis of extracts from HepG2 cells lysates using ARL 1 Rabbit mAb [3WTX] at dilution of 1:1000 incubated at 4°C overnight

View more information on <http://naturebios.com>

IMPORTANT: For western blots, incubate membrane with diluted primary antibody in 1% w/v Milk, 1X TBST at 4°C overnight.

For Research Use Only. Not For Use In Diagnostic Procedures.