

Transportin 3 (TNPO3) Rabbit mAb[2H82]

Cat NO. :A59488

Information:

| Applications | Reactivity: | UniProt ID: | MW(kDa) | Host | Isotype | Size |
|---------------|-------------|-------------|---------|--------|---------|------------------|
| WB,IHC,ICC/IF | H,M,R | Q9Y5L0 | 100kDa | Rabbit | IgG | 50ul 100ul,200ul |

Applications detail:

| Application | Dilution |
|--|-------------|
| WB | 1:1000-2000 |
| IHC | 1:100 |
| ICC/IF | 1:100 |
| The optimal dilutions should be determined by the end user | |

Conjugate:

UnConjugate

Form:

Liquid

sensitivity:

Endogenous

Purification:

Protein A purification

Specificity:

Antibody is produced by immunizing animals with a synthetic peptide of human Transportin 3 (TNPO3).

Storage buffer and conditions:

Antibody store in 10 mM PBS, 0.5mg/ml BSA, 50% glycerol (buffer) .

Shipped at 4°C. Store at -20°C or -80°C.

Products are valid for one natural year of receipt.Avoid repeated freeze / thaw cycles.

Tissue specificity:

Expressed in skeletal muscle..

Subcellular location:

Nucleus envelope. Cytoplasm.

Function:

Importin, which transports target proteins into the nucleus (PubMed:10366588, PubMed:10713112, PubMed:11517331, PubMed:12628928, PubMed:24449914). Specifically mediates the nuclear import of splicing factor serine/arginine (SR) proteins, such as RBM4, SFRS1 and SFRS2, by recognizing phosphorylated SR domains (PubMed:10366588, PubMed:10713112, PubMed:11517331, PubMed:12628928, PubMed:24449914). Also mediates the nuclear import of serine/arginine (SR) protein CPSF6, independently of CPSF6 phosphorylation (PubMed:30916345, PubMed:31465518). The nuclear import process is regulated by the small GTPase Ran that partitions between cytoplasm and nucleus in the predominantly GDP- and GTP-bound form, respectively

Introduction: **WB:** Western Blot **IP:** Immunoprecipitation **IHC:** Immunohistochemistry **ChIP:** Chromatin Immunoprecipitation **ICC/IF:** Immunocytochemistry/Immunofluorescence **F:** Flow Cytometry

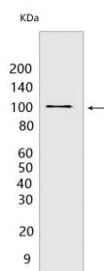
Cross Reactivity: **H:** human **M:** mouse **R:** rat **Hm:** hamster **Mk:** monkey **Vir:** virus **Ml:** mink **C:** chicken **Dm:** D. melanogaster **X:** Xenopus **Z:** zebrafish **B:** bovine **Dg:** dog **Pg:** pig **Hr:** horse

For Research Use Only. Not For Use In Diagnostic Procedures.

(PubMed:23878195, PubMed:24449914). Importin associates with target cargo proteins in the cytoplasm, and the competitive binding of GTP-bound Ran induces the release of cargos in the nucleus (PubMed:23878195, PubMed:24449914)... (Microbial infection) Involved in immunodeficiency virus (HIV-1) infection by importing the pre-integration complex (PIC) into the nucleus (PubMed:18722123, PubMed:21901095, PubMed:22398280, PubMed:29329553). Required for a nuclear maturation step of HIV-1 prior to integration (PubMed:21901095, PubMed:22398280)..

Validation Data:

Transportin 3 (TNPO3) Rabbit mAb[2H82] Images



Western blot (SDS PAGE) analysis of extracts from HeLa cells. Using Transportin 3 (TNPO3) Rabbit mAb IgG [2H82] at dilution of 1:1000 incubated at 4°C over night.

View more information on <http://naturebios.com>

IMPORTANT: For western blots, incubate membrane with diluted primary antibody in 1% w/v Milk, 1X TBST at 4°C overnight.