

ADRM1/ARM-1 Rabbit mAb [MRWI]

Cat NO. :A66109

Information:

Applications	Reactivity:	UniProt ID:	MW(kDa)	Host	Isotype	Size
WB,IHC	H	Q16186	42 kDa	Rabbit	IgG	50ul,100ul,200ul

Applications detail:

Application	Dilution
WB	1:1000-2000
IHC	1:100
The optimal dilutions should be determined by the end user	

Conjugate:

UnConjugate

Form:

Liquid

sensitivity:

Endogenous

Purification:

Protein A purification

Specificity:

Antibody is produced by immunizing animals with a synthetic peptide at the sequence of human ADRM1/ARM-1

Storage buffer and conditions :

Antibody store in 10 mM PBS, 0.5mg/ml BSA, 50% glycerol (buffer) .

Shipped at 4°C. Store at -20°C or -80°C.

Products are valid for one natural year of receipt.Avoid repeated freeze / thaw cycles.

Tissue specificity:

Subcellular location:

Cytoplasm. Nucleus.

Function:

Component of the 26S proteasome, a multiprotein complex involved in the ATP-dependent degradation of ubiquitinated proteins (PubMed:16815440, PubMed:16906146, PubMed:16990800, PubMed:17139257, PubMed:18497817, PubMed:24752541, PubMed:25702870, PubMed:25702872). This complex plays a key role in the maintenance of protein homeostasis by removing misfolded or damaged proteins, which could impair cellular functions, and by removing proteins whose functions are no longer required (PubMed:16815440, PubMed:16906146, PubMed:16990800, PubMed:17139257, PubMed:18497817, PubMed:24752541, PubMed:25702870, PubMed:25702872). Therefore, the proteasome participates in numerous cellular processes,

Introduction: **WB:** Western Blot **IP:** Immunoprecipitation **IHC:** Immunohistochemistry **ChIP:** Chromatin Immunoprecipitation **ICC/IF:** Immunocytochemistry/Immunofluorescence **F:** Flow Cytometry

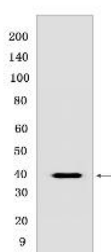
Cross Reactivity: **H:** human **M:** mouse **R:** rat **Hm:** hamster **Mk:** monkey **Vir:** virus **Ml:** mink **C:** chicken **Dm** D. melanogaster **X:** Xenopus **Z:** zebrafish **B:** bovine **Dg:** dog **Pg:** pig **Hr:** horse

For Research Use Only. Not For Use In Diagnostic Procedures.

including cell cycle progression, apoptosis, or DNA damage repair (PubMed:16815440, PubMed:16906146, PubMed:16990800, PubMed:17139257, PubMed:18497817, PubMed:24752541, PubMed:25702870, PubMed:25702872). Within the complex, functions as a proteasomal ubiquitin receptor (PubMed:18497817). Engages and activates 19S-associated deubiquitinases UCHL5 and PSMD14 during protein degradation (PubMed:16906146, PubMed:16990800, PubMed:17139257, PubMed:24752541). UCHL5 reversibly associate with the 19S regulatory particle whereas PSMD14 is an intrinsic subunit of the proteasome lid subcomplex (PubMed:16906146, PubMed:16990800, PubMed:17139257, PubMed:24752541)..

Validation Data:

ADRM1/ARM-1 Rabbit mAb [MRWI] Images



Western blot (SDS PAGE) analysis of extracts from HEK293T cells. Using ADRM1/ARM-1 Rabbit mAb [MRWI] at dilution of 1:1000 incubated at 4°C over night.

View more information on <http://naturebios.com>

IMPORTANT: For western blots, incubate membrane with diluted primary antibody in 1% w/v Milk, 1X TBST at 4°C overnight.