

KAT8 / MYST1 / MOF Rabbit mAb [302M]

Cat NO. :A67022

Information:

Applications	Reactivity:	UniProt ID:	MW(kDa)	Host	Isotype	Size
WB,IHC,ICC/IF	H,M,R	Q9H7Z6	52 kDa	Rabbit	IgG	100ul,200ul

Applications detail:

Application	Dilution
WB	1:1000-2000
IHC	1:100
ICC/IF	1:100
The optimal dilutions should be determined by the end user	

Conjugate:

UnConjugate

Form:

Liquid

sensitivity:

Endogenous

Purification:

Protein A purification

Specificity:

Antibody is produced by immunizing animals with a synthetic peptide at the sequence of human KAT8 / MYST1 / MOF

Storage buffer and conditions :

Antibody store in 10 mM PBS, 0.5mg/ml BSA, 50% glycerol (buffer) .

Shipped at 4°C. Store at -20°C or -80°C.

Products are valid for one natural year of receipt.Avoid repeated freeze / thaw cycles.

Tissue specificity:

Subcellular location:

Nucleus. Chromosome.

Function:

Histone acetyltransferase which may be involved in transcriptional activation (PubMed:12397079, PubMed:22020126). May influence the function of ATM (PubMed:15923642). As part of the MSL complex it is involved in acetylation of nucleosomal histone H4 producing specifically H4K16ac (PubMed:16227571, PubMed:16543150, PubMed:21217699, PubMed:22547026, PubMed:22020126). As part of the NSL complex it may be involved in acetylation of nucleosomal histone H4 on several lysine residues (PubMed:20018852, PubMed:22547026). That activity is less specific than the one of the MSL complex (PubMed:20018852, PubMed:22547026). Can also acetylate TP53/p53 at 'Lys-120'..

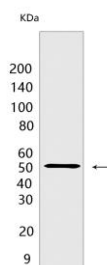
Introduction: **WB:** Western Blot **IP:** Immunoprecipitation **IHC:** Immunohistochemistry **ChIP:** Chromatin Immunoprecipitation **ICC/IF:** Immunocytochemistry/Immunofluorescence **F:** Flow Cytometry

Cross Reactivity: **H:** human **M:** mouse **R:** rat **Hm:** hamster **Mk:** monkey **Vir:** virus **Ml:** mink **C:** chicken **Dm:** D. melanogaster **X:** Xenopus **Z:** zebrafish **B:** bovine **Dg:** dog **Pg:** pig **Hr:** horse

For Research Use Only. Not For Use In Diagnostic Procedures.

Validation Data:

KAT8 / MYST1 / MOF Rabbit mAb [302M] Images



Western blot (SDS PAGE) analysis of extracts from HepG2 cells.Using KAT8 / MYST1 / MOFRabbit mAb [302M] at dilution of 1:1000 incubated at 4 °C over night.

View more information on <http://naturebios.com>

IMPORTANT: For western blots, incubate membrane with diluted primary antibody in 1% w/v Milk, 1X TBST at 4°C overnight.