

PNUTS Rabbit mAb [60VM]

Cat NO. :A68809

Information:

Applications	Reactivity:	UniProt ID:	MW(kDa)	Host	Isotype	Size
WB,IHC,ICC/IF	H	Q96QC0	99 kDa	Rabbit	IgG	100ul,200ul

Applications detail:

Application	Dilution
WB	1:1000-2000
IHC	1:100,
ICC/IF	1:100,
The optimal dilutions should be determined by the end user	

Conjugate:

UnConjugate

Form:

Liquid

sensitivity:

Endogenous

Purification:

Protein A purification

Specificity:

Antibody is produced by immunizing animals with a synthetic peptide of Human PNUTS.

Storage buffer and conditions:

Antibody store in 10 mM PBS, 0.5mg/ml BSA, 50% glycerol (buffer) .

Shipped at 4°C. Store at-20°C or -80°C.

Products are valid for one natural year of receipt.Avoid repeated freeze / thaw cycles.

Tissue specificity:

Expressed in heart, brain, placenta, lung, liver, skeletal muscle, kidney and pancreas..

Subcellular location:

Nucleus.

Function:

Scaffold protein which mediates the formation of the PTW/PP1 phosphatase complex by providing a binding platform to each component of the complex. The PTW/PP1 phosphatase complex plays a role in the control of chromatin structure and cell cycle progression during the transition from mitosis into interphase. Mediates interaction of WDR82 and PPP1CA. Inhibitor of PPP1CA and PPP1CC phosphatase activities. Has inhibitory activity on PPP1CA only when phosphorylated. Binds to mRNA, single-stranded DNA (ssDNA), poly(A) and poly(G) homopolymers (By similarity)..

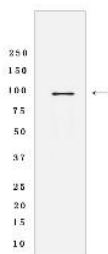
Introduction: **WB:** Western Blot **IP:** Immunoprecipitation **IHC:** Immunohistochemistry **ChIP:** Chromatin Immunoprecipitation **ICC/IF:** Immunocytochemistry/Immunofluorescence **F:** Flow Cytometry

Cross Reactivity: **H:** human **M:** mouse **R:** rat **Hm:** hamster **Mk:** monkey **Vir:** virus **Ml:** mink **C:** chicken **Dm** D. melanogaster **X:** Xenopus **Z:** zebrafish **B:** bovine **Dg:** dog **Pg:** pig **Hr:** horse

For Research Use Only. Not For Use In Diagnostic Procedures.

Validation Data:

PNUTS Rabbit mAb [60VM] Images



Western blot (SDS PAGE) analysis of extracts from HeLa cells lysates using PNUTS Rabbit mAb [60VM] at dilution of 1:1000 incubated at 4°C overnight

View more information on <http://naturebios.com>

IMPORTANT: For western blots, incubate membrane with diluted primary antibody in 1% w/v Milk, 1X TBST at 4°C overnight.